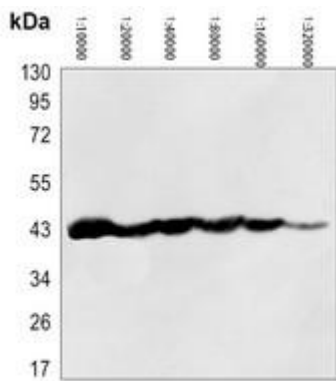


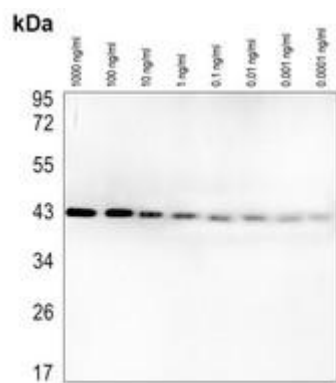


Anti-Beta-actin Antibody-HRP labeled

| Catalog # | Source | Reactivity | Applications |
|--------------------------|--|--------------------------|--------------|
| GM0001HRP | Mouse | H, M, R, Mk, C, P, Rb, Z | WB |
| Description | Mouse monoclonal antibody to Beta-actin-HRP labeled | | |
| Immunogen | KLH-conjugated synthetic peptide encompassing a sequence of human Beta-actin-HRP labeled. The exact sequence is proprietary. | | |
| Purification | | | |
| Specificity | Recognizes endogenous levels of Beta-actin protein. | | |
| Clonality | Monoclonal | | |
| Conjugation | HRP | | |
| Form | Liquid in 0.42% Potassium phosphate, 0.87% Sodium chloride, pH 7.3, 30% glycerol, and 0.01% sodium azide. | | |
| Dilution | WB (1/10000 - 1/200000) | | |
| Gene Symbol | ACTB | | |
| Alternative Names | Actin cytoplasmic 1; Beta-actin | | |
| Entrez Gene | 60 (Human); 11461 (Mouse); 81822 (Rat) | | |
| SwissProt | P60709 (Human); P60710 (Mouse); P60711 (Rat) | | |
| Storage/Stability | Shipped at 4°C. Upon delivery aliquot and store at -20°C for one year. Avoid freeze/thaw cycles. | | |



Western blot analysis of Beta-actin Antibody-HRP labeled expression in HEK293T whole cell lysates using different dilutions from 1:10000 to 1:320000. (Predicted band size: 41 kD; Observed band size: 42 kD)



Western blot analysis of Beta-actin Antibody-HRP labeled using different Recombinant Human ACTB Protein concentration from 1000 ng/ml to 0.0001 ng/ml. (Predicted band size: 41 kD; Observed band size: 42 kD)

