

Recombinant Anti-MSH6 Rabbit mAb [KO/KD Validated] Product Manual

Cat No: CMA1009

Source: Rabbit

Reactivity: H

Applications: WB, IH

*Application Key:

H - Human, M - Mouse, R - Rat, B - Bovine, C - Chicken, D - Dog, G - Goat, Mk - Monkey, P - Pig, Rb - Rabbit, S - Sheep,
Z - Zebrafish

*Species Reactivity Key:

E- ELISA, WB - Western blot, IH - Immunohistochemistry, IF - Immunofluorescence, FC - Flow cytometry, IC -
Immunocytochemistry, IP - Immunoprecipitation, ChIP - Chromatin Immunoprecipitation, EMSA - Electrophoretic
Mobility Shift Assay, BL - Blocking, SE - Sandwich ELISA, CBE - Cell-based ELISA, RNAi - RNA interference

Datasheet

Description: Recombinant rabbit monoclonal antibody to MSH6

Immunogen: Recombinant fusion protein of human MSH6. The exact sequence is proprietary.

Purification: The antibody was purified by immunogen affinity chromatography.

Clonality: Monoclonal

Form: Liquid in PBS, pH 7.3, 50% glycerol, and 0.05% Proclin300.

Dilution: WB (1/500 - 1/1000), IH (1/100 - 1/200)

Gene Symbol: MSH6

Alternative Names: GTBP; DNA mismatch repair protein Msh6; hMSH6; G/T mismatch-binding protein; GTBP; GTMBP;

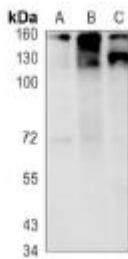
MutS-alpha 160 kDa subunit; p160

Entrez Gene (Human): 2956;

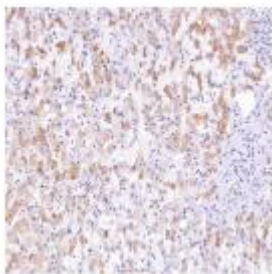
SwissProt (Human): P52701;

Storage/Stability: Shipped at 4°C. Upon delivery aliquot and store at -20°C for one year. Avoid freeze/thaw cycles.

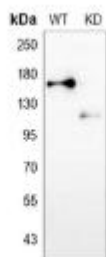
Validation



Western blot analysis of MSH6 expression in HepG2 (A), PC3 (B), MCF7 (C) whole cell lysates. (Predicted band size: 152 kD; Observed band size: 160 kD)



Immunohistochemical analysis of MSH6 staining in human liver cancer formalin fixed paraffin embedded tissue section. The section was pre-treated using heat mediated antigen retrieval with sodium citrate buffer (pH 6.0). The section was then incubated with the antibody at room temperature and detected using an HRP conjugated compact polymer system. DAB was used as the chromogen. The section was then counterstained with haematoxylin and mounted with DPX.



Western blot analysis of MSH6 expression in wild type (WT) and knockdown (KD) HT1080 cell lysates.

官方网址: <http://www.genesion.com.cn>

订货热线: 4006169114, 020-84224925

Email: whiga22@126.com

