

Recombinant Anti-CD68 Rabbit mAb Product Manual

Cat No: GMA1085

E- Source: Rabbit

F- Reactivity: H, M, R

G- Applications: WB, IH

H- *Application Key:

I- H - Human, M - Mouse, R - Rat, B - Bovine, C - Chicken, D - Dog, G - Goat, Mk - Monkey, P - Pig, Rb - Rabbit, S - Sheep, Z - Zebrafish

J- *Species Reactivity Key:

K- E- ELISA, WB - Western blot, IH - Immunohistochemistry, IF - Immunofluorescence, FC - Flow cytometry, IC - Immunocytochemistry, IP - Immunoprecipitation, ChIP - Chromatin Immunoprecipitation, EMSA - Electrophoretic Mobility Shift Assay, BL - Blocking, SE - Sandwich ELISA, CBE - Cell-based ELISA, RNAi - RNA interference

Datasheet

Description: Recombinant rabbit monoclonal antibody to CD68

Immunogen: Recombinant fusion protein of human CD68. The exact sequence is proprietary.

Purification: The antibody was purified by immunogen affinity chromatography.

Clonality: Monoclonal

Form: Liquid in PBS, pH 7.3, 50% glycerol, and 0.05% Proclin300.

Dilution: WB (1/500 - 1/1000), IH (1/100 - 1/500)

Gene Symbol: CD68

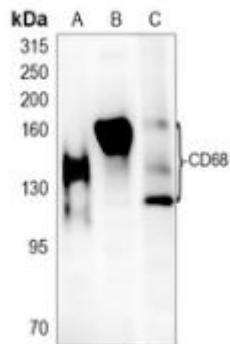
Alternative Names: Macrosialin; Gp110; CD68

Entrez Gene (Human): 968;

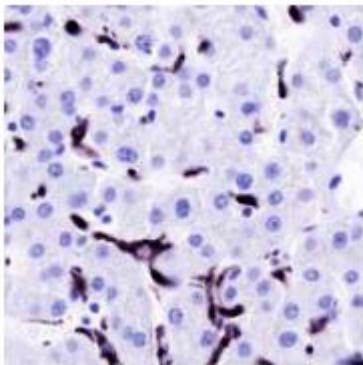
SwissProt (Human): P34810;

Storage/Stability: Shipped at 4°C. Upon delivery aliquot and store at -20°C for one year. Avoid freeze/thaw cycles.

Validation



Western blot analysis of CD68 expression in THP1 (A), A431 (B), rat brain (C) whole cell lysates. (Predicted band size: 31; 34; 37 kD; Observed band size: 110-150 kD)



Immunohistochemical analysis of CD68 staining in human liver formalin fixed paraffin embedded tissue section. The section was pre-treated using heat mediated antigen retrieval with sodium citrate buffer (pH 6.0). The section was then incubated with the antibody at room temperature and detected using an HRP conjugated compact polymer system. DAB was used as the chromogen. The section was then counterstained with haematoxylin and mounted with DPX.

官方网址 : <http://www.gencision.com.cn>

订货热线 : 4006169114、020-84224925

Email: whiga22@126.com

