

Recombinant Anti-Keratin 6 Rabbit mAb Product Manual

Cat No: GMA1022

Source: Rabbit

Reactivity: H, M, R

Applications: WB, IH

***Application Key:**

H - Human, M - Mouse, R - Rat, B - Bovine, C - Chicken, D - Dog, G - Goat, Mk - Monkey, P - Pig, Rb - Rabbit, S - Sheep,
Z - Zebrafish

***Species Reactivity Key:**

E- ELISA, WB - Western blot, IH - Immunohistochemistry, IF - Immunofluorescence, FC - Flow cytometry, IC -
Immunocytochemistry, IP - Immunoprecipitation, ChIP - Chromatin Immunoprecipitation, EMSA - Electrophoretic
Mobility Shift Assay, BL - Blocking, SE - Sandwich ELISA, CBE - Cell-based ELISA, RNAi - RNA interference

Datasheet

Description: Recombinant rabbit monoclonal antibody to Keratin 6

Immunogen: Recombinant fusion protein of human Keratin 6. The exact sequence is proprietary.

Purification: The antibody was purified by immunogen affinity chromatography.

Clonality: Monoclonal

Form: Liquid in PBS, pH 7.3, 50% glycerol, and 0.05% Proclin300.

Dilution: WB (1/500 - 1/1000), IH (1/100 - 1/200)

Gene Symbol: KRT6C

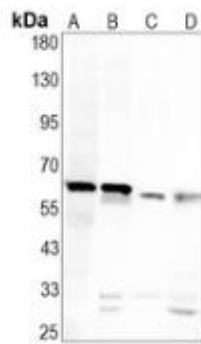
Alternative Names: KRT6E; Keratin, type II cytoskeletal 6C; Cytokeratin-6C; CK-6C; Cytokeratin-6E; CK-6E; Keratin K6h;
Keratin-6C; K6C; Type-II keratin Kb12

Entrez Gene (Human): 286887;

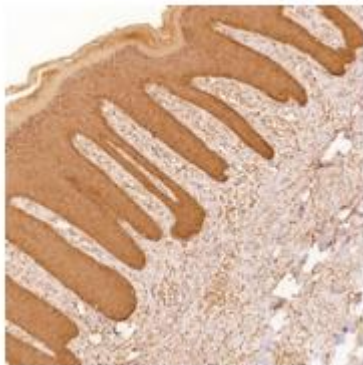
SwissProt (Human): P48668;

Storage/Stability: Shipped at 4°C. Upon delivery aliquot and store at -20°C for one year. Avoid freeze/thaw cycles.

Validation



Western blot analysis of Keratin 6 expression in A375 (A), mouse kidney (B), rat lung (C), rat kidney (D) whole cell lysates. (Predicted band size: 60 kD; Observed band size: 60 kD)



Immunohistochemical analysis of Keratin 6 staining in human skin formalin fixed paraffin embedded tissue section. The section was pre-treated using heat mediated antigen retrieval with sodium citrate buffer (pH 6.0). The section was then incubated with the antibody at room temperature and detected using an HRP conjugated compact polymer system. DAB was used as the chromogen. The section was then counterstained with haematoxylin and mounted with DPX.

官方网址: <http://www.genesion.com.cn>

订货热线: 4006169114、020-84224925

Email: whiga22@126.com

