

## Recombinant Anti-CD10 Rabbit mAb Product Manual

**Cat No: GMA1056**

Source: Rabbit

Reactivity: H, M, R

Applications: WB, IH, IF/IC

\*Application Key:

H - Human, M - Mouse, R - Rat, B - Bovine, C - Chicken, D - Dog, G - Goat, Mk - Monkey, P - Pig, Rb - Rabbit, S - Sheep, Z - Zebrafish

\*Species Reactivity Key:

E- ELISA, WB - Western blot, IH - Immunohistochemistry, IF - Immunofluorescence, FC - Flow cytometry, IC - Immunocytochemistry, IP - Immunoprecipitation, ChIP - Chromatin Immunoprecipitation, EMSA - Electrophoretic Mobility Shift Assay, BL - Blocking, SE - Sandwich ELISA, CBE - Cell-based ELISA, RNAi - RNA interference

### Datasheet

Description: Recombinant rabbit monoclonal antibody to CD10

Immunogen: Recombinant fusion protein of human CD10. The exact sequence is proprietary.

Purification: The antibody was purified by immunogen affinity chromatography.

Clonality: Monoclonal

Form: Liquid in PBS, pH 7.3, 50% glycerol, and 0.05% Proclin300.

Dilution: WB (1/500 - 1/1000), IH (1/100 - 1/500), IF/IC (1/50 - 1/200)

Gene Symbol: MME

Alternative Names: EPN; Neprilysin; Atriopeptidase; Common acute lymphocytic leukemia antigen; CALLA; Enkephalinase; Neutral endopeptidase 24.11; NEP; Neutral endopeptidase; Skin fibroblast elastase; SFE; CD10

Entrez Gene (Human): 4311;

Entrez Gene (Mouse): 17380;

Entrez Gene (Rat): 24590;

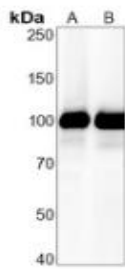
SwissProt (Human): P08473;

SwissProt (Mouse): Q61391;

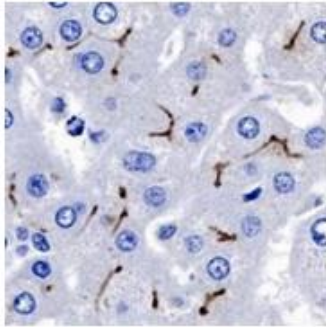
SwissProt (Rat): P07861;

Storage/Stability: Shipped at 4°C. Upon delivery aliquot and store at -20°C for one year. Avoid freeze/thaw cycles.

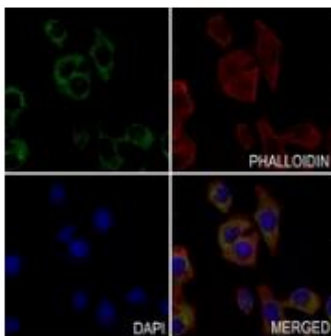
## Validation



Western blot analysis of CD10 expression in mouse kidney (A), rat kidney (B) whole cell lysates. (Predicted band size: 85 kD; Observed band size: 100 kD)



Immunohistochemical analysis of CD10 staining in human liver formalin fixed paraffin embedded tissue section. The section was pre-treated using heat mediated antigen retrieval with sodium citrate buffer (pH 6.0). The section was then incubated with the antibody at room temperature and detected using an HRP conjugated compact polymer system. DAB was used as the chromogen. The section was then counterstained with haematoxylin and mounted with DPX.



Immunofluorescent analysis of CD10 staining in HepG2 cells. Formalin-fixed cells were permeabilized with 0.1% Triton X-100 in TBS for 5-10 minutes and blocked with 3% BSA-PBS for 30 minutes at room temperature. Cells were probed with the primary antibody in 3% BSA-PBS and incubated overnight at 4 °C in a humidified chamber. Cells were washed with PBST and incubated with an AF488-conjugated secondary antibody (green) in PBS at room temperature in the dark. Phalloidin - AF594 was used to stain Actin filaments (red). DAPI was used to stain the cell nuclei (blue).

官方网址: <http://www.genscion.com.cn>

订货热线: 4006169114、020-84224925

Email: [whiga22@126.com](mailto:whiga22@126.com)

