

Recombinant Anti-Vinculin Rabbit mAb Product Manual

Cat No: GMA1189

Source: Rabbit

Reactivity: H, M, R

Applications: WB, IH

***Application Key:**

H - Human, M - Mouse, R - Rat, B - Bovine, C - Chicken, D - Dog, G - Goat, Mk - Monkey, P - Pig, Rb - Rabbit, S - Sheep, Z - Zebrafish

***Species Reactivity Key:**

E- ELISA, WB - Western blot, IH - Immunohistochemistry, IF - Immunofluorescence, FC - Flow cytometry, IC - Immunocytochemistry, IP - Immunoprecipitation, ChIP - Chromatin Immunoprecipitation, EMSA - Electrophoretic Mobility Shift Assay, BL - Blocking, SE - Sandwich ELISA, CBE - Cell-based ELISA, RNAi - RNA interference

Datasheet

Description: Recombinant rabbit monoclonal antibody to Vinculin

Immunogen: Recombinant fusion protein of human Vinculin. The exact sequence is proprietary.

Purification: The antibody was purified by immunogen affinity chromatography.

Clonality: Monoclonal

Form: Liquid in PBS, pH 7.3, 50% glycerol, and 0.05% Proclin300.

Dilution: WB (1/500 - 1/1000), IH (1/50 - 1/200)

Gene Symbol: VCL

Alternative Names: Vinculin; Metavinculin; MV

Entrez Gene (Human): 7414;

Entrez Gene (Mouse): 22330;

Entrez Gene (Rat): 305679;

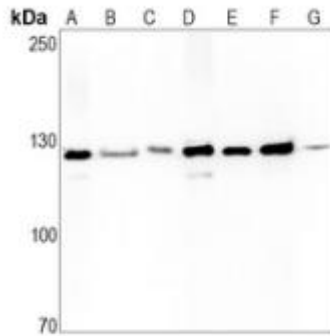
SwissProt (Human): P18206;

SwissProt (Mouse): Q64727;

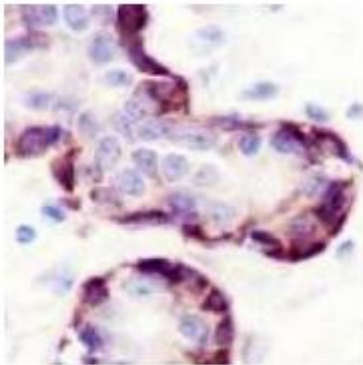
SwissProt (Rat): P85972;

Storage/Stability: Shipped at 4°C. Upon delivery aliquot and store at -20°C for one year. Avoid freeze/thaw cycles.

Validation



Western blot analysis of Vinculin expression in MG63 (A), A375 (B), HUT78 (C), mouse lung (D), mouse kidney (E), rat lung (F), rat kidney (G) whole cell lysates. (Predicted band size: 123 kD; Observed band size: 124 kD)



Immunohistochemical analysis of Vinculin staining in human breast cancer formalin fixed paraffin embedded tissue section. The section was pre-treated using heat mediated antigen retrieval with sodium citrate buffer (pH 6.0). The section was then incubated with the antibody at room temperature and detected using an HRP conjugated compact polymer system. DAB was used as the chromogen. The section was then counterstained with haematoxylin and mounted with DPX.

