

Recombinant Anti-BCL2 Rabbit mAb Product Manual

Cat No: GMA1199

Source: Rabbit

Reactivity: H, M, R

Applications: WB, IH, IF/IC

*Application Key:

H - Human, M - Mouse, R - Rat, B - Bovine, C - Chicken, D - Dog, G - Goat, Mk - Monkey, P - Pig, Rb - Rabbit, S - Sheep, Z - Zebrafish

*Species Reactivity Key:

E - ELISA, WB - Western blot, IH - Immunohistochemistry, IF - Immunofluorescence, FC - Flow cytometry, IC - Immunocytochemistry, IP - Immunoprecipitation, ChIP - Chromatin Immunoprecipitation, EMSA - Electrophoretic Mobility Shift Assay, BL - Blocking, SE - Sandwich ELISA, CBE - Cell-based ELISA, RNAi - RNA interference

Datasheet

Description: Recombinant rabbit monoclonal antibody to BCL2

Immunogen: KLH-conjugated synthetic peptide encompassing a sequence within the center region of human BCL2. The exact sequence is proprietary.

Purification: This antibody is purified through a protein G column.

Clonality: Monoclonal

Form: Liquid in PBS, pH 7.3, 50% glycerol, and 0.05% Proclin300.

Dilution: WB (1/1000 - 1/3000), IH (1/100 - 1/300), IF/IC (1/100 - 1/300)

Gene Symbol: BCL2

Alternative Names: Apoptosis regulator Bcl-2

Entrez Gene (Human): 596;

Entrez Gene (Mouse): 12043;

Entrez Gene (Rat): 24224;

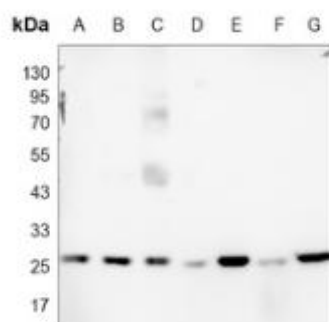
SwissProt (Human): P10415;

SwissProt (Mouse): P10417;

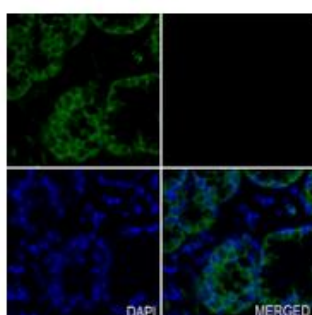
SwissProt (Rat): P49950;

Storage/Stability: Shipped at 4°C. Upon delivery aliquot and store at -20°C for one year. Avoid freeze/thaw cycles.

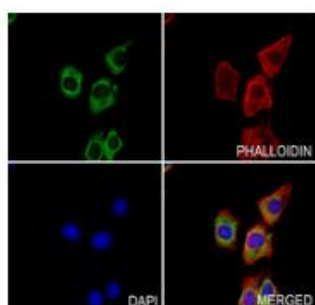
Validation



Western blot analysis of BCL2 expression in H1792 (A), A2780 (B), HUT78 (C), mouse spleen (D), mouse kidney (E), rat spleen (F), rat kidney (G) whole cell lysates. (Predicted band size: 26 kD; Observed band size: 26 kD)



Immunohistochemical analysis of BCL2 staining in human stomach cancer formalin fixed paraffin embedded tissue section. The section was pre-treated using heat mediated antigen retrieval with sodium citrate buffer (pH 6.0). The section was then incubated with the antibody at room temperature and detected using an HRP conjugated compact polymer system. Tyramide-AF488 (green) was used as the chromogen. The section was then counterstained with DAPI (blue).



Immunofluorescent analysis of BCL2 staining in HepG2 cells. Formalin-fixed cells were permeabilized with 0.1% Triton X-100 in TBS for 5-10 minutes and blocked with 3% BSA-PBS for 30 minutes at room temperature. Cells were probed with the primary antibody in 3% BSA-PBS and incubated overnight at 4 °C in a humidified chamber. Cells were washed with PBST and incubated with an AF488-conjugated secondary antibody (green) in PBS at room temperature in the dark. Phalloidin - AF594 was used to stain Actin filaments (red). DAPI was used to stain the cell nuclei (blue).

官方网址: <http://www.genesion.com.cn>

订货热线: 4006169114, 020-84224925

Email: whigs22@126.com

