

Recombinant Anti-ANP Rabbit mAb Product Manual

Cat No: GMA4016

Source: Rabbit

Reactivity: H, M

Applications: WB, IF/IC

*Application Key:

H - Human, M - Mouse, R - Rat, B - Bovine, C - Chicken, D - Dog, G - Goat, Mk - Monkey, P - Pig, Rb - Rabbit, S - Sheep,
Z - Zebrafish

*Species Reactivity Key:

E- ELISA, WB - Western blot, IH - Immunohistochemistry, IF - Immunofluorescence, FC - Flow cytometry, IC -
Immunocytochemistry, IP - Immunoprecipitation, ChIP - Chromatin Immunoprecipitation, EMSA - Electrophoretic
Mobility Shift Assay, BL - Blocking, SE - Sandwich ELISA, CBE - Cell-based ELISA, RNAi - RNA interference

Datasheet

Description: Recombinant rabbit monoclonal antibody to ANP

Immunogen: KLH-conjugated synthetic peptide encompassing a sequence within human ANP. The exact sequence is
proprietary.

Purification: The antibody was purified by immunogen affinity chromatography.

Clonality: Monoclonal

Form: Liquid in PBS, pH 7.4, containing 50% glycerol, 0.2% BSA and 0.01% sodium azide.

Dilution: WB (1/500 - 1/1000), IF/IC (1/50 - 1/200)

Gene Symbol: NPPA

Alternative Names: ANP; PND; Natriuretic peptides A; CDD-ANF; Prepronatriodilatin

Entrez Gene (Human): 4878;

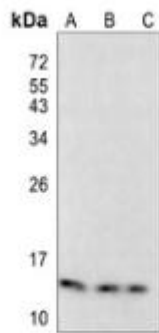
Entrez Gene (Mouse): 230899;

SwissProt (Human): P01160;

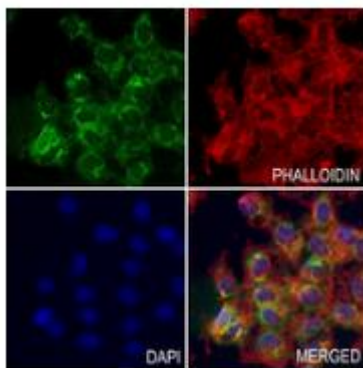
SwissProt (Mouse): P05125;

Storage/Stability: Shipped at 4°C. Upon delivery aliquot and store at -20°C for one year. Avoid freeze/thaw cycles.

Validation



Western blot analysis of ANP expression in HEK293T (A), THP1 (B), mouse brain (C) whole cell lysates. (Predicted band size: 16 kD; Observed band size: 15 kD)



Immunofluorescent analysis of ANP staining in COS7 cells. Formalin-fixed cells were permeabilized with 0.1% Triton X-100 in TBS for 5-10 minutes and blocked with 3% BSA-PBS for 30 minutes at room temperature. Cells were probed with the primary antibody in 3% BSA-PBS and incubated overnight at 4 ° C in a humidified chamber. Cells were washed with PBST and incubated with an AF488-conjugated secondary antibody (green) in PBS at room temperature in the dark. Phalloidin - AF594 was used to stain Actin filaments (red). DAPI was used to stain the cell nuclei (blue).

官方网址 : <http://www.genscion.com.cn>

订货热线 : 4006169114、020-84224925

Email: whiga22@126.com

