

Recombinant Anti-ERp5 Rabbit mAb Product Manual

Cat No: GMA4128

Source: Rabbit

Reactivity: H, M

Applications: WB

*Application Key:

H - Human, M - Mouse, R - Rat, B - Bovine, C - Chicken, D - Dog, G - Goat, Mk - Monkey, P - Pig, Rb - Rabbit, S - Sheep, Z - Zebrafish

*Species Reactivity Key:

E- ELISA, WB - Western blot, IH - Immunohistochemistry, IF - Immunofluorescence, FC - Flow cytometry, IC - Immunocytochemistry, IP - Immunoprecipitation, ChIP - Chromatin Immunoprecipitation, EMSA - Electrophoretic Mobility Shift Assay, BL - Blocking, SE - Sandwich ELISA, CBE - Cell-based ELISA, RNAi - RNA interference

Datasheet

Description: Recombinant rabbit monoclonal antibody to ERp5

Immunogen: KLH-conjugated synthetic peptide encompassing a sequence within human ERp5. The exact sequence is proprietary.

Purification: The antibody was purified by immunogen affinity chromatography.

Clonality: Monoclonal

Form: Liquid in PBS, pH 7.4, containing 50% glycerol, 0.2% BSA and 0.01% sodium azide.

Dilution: WB (1/500 - 1/1000)

Gene Symbol: PDIA6

Alternative Names: ERP5; P5; TXNDC7; Protein disulfide-isomerase A6; Endoplasmic reticulum protein 5; ER protein 5; ERp5; Protein disulfide isomerase P5; Thioredoxin domain-containing protein 7

Entrez Gene (Human): 10130;

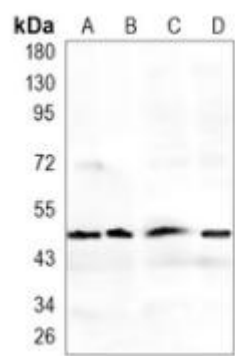
Entrez Gene (Mouse): 71853;

SwissProt (Human): Q15084;

SwissProt (Mouse): Q922R8;

Storage/Stability: Shipped at 4°C. Upon delivery aliquot and store at -20°C for one year. Avoid freeze/thaw cycles.

Validation



Western blot analysis of ERp5 expression in A549 (A), PC3 (B), THP1 (C), mouse liver (D) whole cell lysates. (Predicted band size: 48 kD; Observed band size: 48 kD)

