

Recombinant Anti-Estrogen Receptor alpha Rabbit mAb

Product Manual

Cat No: GMA4154

Source: Rabbit

Reactivity: H, M, R

Applications: WB, IH

*Application Key:

H - Human, M - Mouse, R - Rat, B - Bovine, C - Chicken, D - Dog, G - Goat, Mk - Monkey, P - Pig, Rb - Rabbit, S - Sheep, Z - Zebrafish

*Species Reactivity Key:

E- ELISA, WB - Western blot, IH - Immunohistochemistry, IF - Immunofluorescence, FC - Flow cytometry, IC - Immunocytochemistry, IP - Immunoprecipitation, ChIP - Chromatin Immunoprecipitation, EMSA - Electrophoretic Mobility Shift Assay, BL - Blocking, SE - Sandwich ELISA, CBE - Cell-based ELISA, RNAi - RNA interference

Datasheet

Description: Recombinant rabbit monoclonal antibody to Estrogen Receptor alpha

Immunogen: KLH-conjugated synthetic peptide encompassing a sequence within human Estrogen Receptor alpha. The exact sequence is proprietary.

Purification: The antibody was purified by immunogen affinity chromatography.

Clonality: Monoclonal

Form: Liquid in PBS, pH 7.4, containing 50% glycerol, 0.2% BSA and 0.01% sodium azide.

Dilution: WB (1/500 - 1/1000), IH (1/50 - 1/200)

Gene Symbol: ESR1

Alternative Names: ESR; NR3A1; Estrogen receptor; ER; ER-alpha; Estradiol receptor; Nuclear receptor subfamily 3 group A member 1

Entrez Gene (Human): 2099;

Entrez Gene (Mouse): 13982;

Entrez Gene (Rat): 24890;

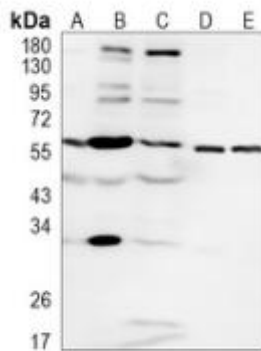
SwissProt (Human): P03372;

SwissProt (Mouse): P19785;

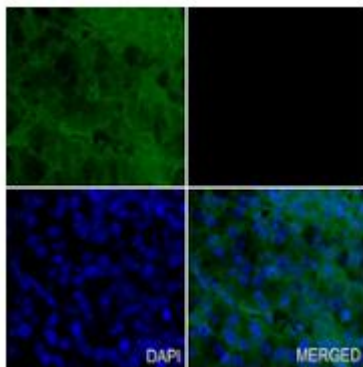
SwissProt (Rat): P06211;

Storage/Stability: Shipped at 4°C. Upon delivery aliquot and store at -20°C for one year. Avoid freeze/thaw cycles.

Validation



Western blot analysis of Estrogen Receptor alpha expression in H1792 (A), Myla2059 (B), LO2 (C), mouse liver (D), rat liver (E) whole cell lysates. (Predicted band size: 66 kD; Observed band size: 60 kD)



Immunohistochemical analysis of Estrogen Receptor alpha staining in human squamous cell carcinoma formalin fixed paraffin embedded tissue section. The section was pre-treated using heat mediated antigen retrieval with sodium citrate buffer (pH 6.0). The section was then incubated with the antibody at room temperature and detected using an HRP conjugated compact polymer system. Tyramide-AF488 (green) was used as the chromogen. The section was then counterstained with DAPI (blue).

官方网址 : <http://www.genscion.com.cn>

订货热线 : 4006169114、020-84224925

Email: whiga22@126.com

