

## Recombinant Anti-IBA1 Rabbit mAb Product Manual

**Cat No: GMA4437**

Source: Rabbit

Reactivity: H, M, R

Applications: WB, IF/IC

\*Application Key:

H - Human, M - Mouse, R - Rat, B - Bovine, C - Chicken, D - Dog, G - Goat, Mk - Monkey, P - Pig, Rb - Rabbit, S - Sheep, Z - Zebrafish

\*Species Reactivity Key:

E- ELISA, WB - Western blot, IH - Immunohistochemistry, IF - Immunofluorescence, FC - Flow cytometry, IC - Immunocytochemistry, IP - Immunoprecipitation, ChIP - Chromatin Immunoprecipitation, EMSA - Electrophoretic Mobility Shift Assay, BL - Blocking, SE - Sandwich ELISA, CBE - Cell-based ELISA, RNAi - RNA interference

### Datasheet

Description: Recombinant rabbit monoclonal antibody to IBA1

Immunogen: KLH-conjugated synthetic peptide encompassing a sequence within human IBA1. The exact sequence is proprietary.

Purification: The antibody was purified by immunogen affinity chromatography.

Clonality: Monoclonal

Form: Liquid in PBS, pH 7.4, containing 50% glycerol, 0.2% BSA and 0.01% sodium azide.

Dilution: WB (1/500 - 1/1000), IF/IC (1/50 - 1/200)

Gene Symbol: AIF1

Alternative Names: G1; IBA1; Allograft inflammatory factor 1; AIF-1; Ionized calcium-binding adapter molecule 1; Protein G1

Entrez Gene (Human): 199;

Entrez Gene (Mouse): 11629;

Entrez Gene (Rat): 29427;

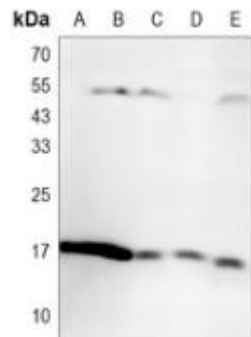
SwissProt (Human): P55008;

SwissProt (Mouse): O70200;

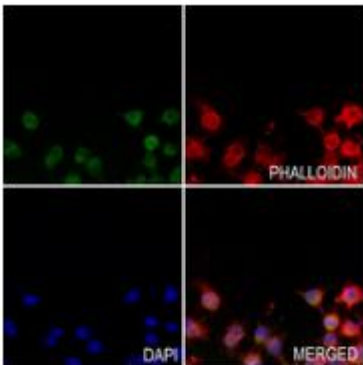
SwissProt (Rat): P55009;

Storage/Stability: Shipped at 4°C. Upon delivery aliquot and store at -20°C for one year. Avoid freeze/thaw cycles.

## Validation



Western blot analysis of Desmoglein 2 expression in HepG2 (A), K562 (B) whole cell lysates. (Predicted band size: 122 kD; Observed band size: 160 kD)



Immunofluorescent analysis of IBA1 staining in RAW264.7 cells. Formalin-fixed cells were permeabilized with 0.1% Triton X-100 in TBS for 5-10 minutes and blocked with 3% BSA-PBS for 30 minutes at room temperature. Cells were probed with the primary antibody in 3% BSA-PBS and incubated overnight at 4 ° C in a humidified chamber. Cells were washed with PBST and incubated with an AF488-conjugated secondary antibody (green) in PBS at room temperature in the dark. Phalloidin - AF594 was used to stain Actin filaments (red). DAPI was used to stain the cell nuclei (blue).

