

Recombinant Anti-STAT1 Rabbit mAb Product Manual

Cat No: GMA4511

Source: Rabbit

Reactivity: H, M, R

Applications: WB

*Application Key:

H - Human, M - Mouse, R - Rat, B - Bovine, C - Chicken, D - Dog, G - Goat, Mk - Monkey, P - Pig, Rb - Rabbit, S - Sheep, Z - Zebrafish

*Species Reactivity Key:

E- ELISA, WB - Western blot, IH - Immunohistochemistry, IF - Immunofluorescence, FC - Flow cytometry, IC - Immunocytochemistry, IP - Immunoprecipitation, ChIP - Chromatin Immunoprecipitation, EMSA - Electrophoretic Mobility Shift Assay, BL - Blocking, SE - Sandwich ELISA, CBE - Cell-based ELISA, RNAi - RNA interference

Datasheet

Description: Recombinant rabbit monoclonal antibody to STAT1

Immunogen: KLH-conjugated synthetic peptide encompassing a sequence within human STAT1 protein. The exact sequence is proprietary.

Purification: The antibody was purified by immunogen affinity chromatography.

Clonality: Monoclonal

Form: Liquid in PBS, pH 7.4, containing 50% glycerol, 0.2% BSA and 0.01% sodium azide.

Dilution: WB (1/500 - 1/1000)

Gene Symbol: STAT1

Alternative Names: Signal transducer and activator of transcription 1-alpha/beta; Transcription factor ISGF-3 components p91/p84

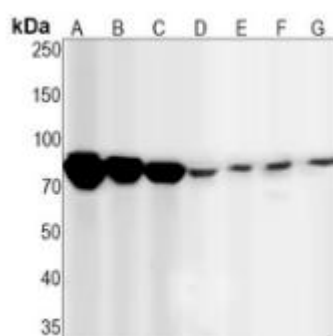
Entrez Gene (Human): 6772;

SwissProt (Human): P42224;

SwissProt (Mouse): P42225;

Storage/Stability: Shipped at 4°C. Upon delivery aliquot and store at -20°C for one year. Avoid freeze/thaw cycles.

Validation



Western blot analysis of STAT1 expression in K562 (A), SHSY5Y (B), A431 (C), mouse liver (D), mouse kidney (E), rat liver (F), rat kidney (G) whole cell lysates. (Predicted band size: 87 kD; Observed band size: 87 kD)

官方网址: <http://www.genesion.com.cn>

订货热线: 4006169114、020-84224925

Email: whiga22@126.com

