

Recombinant Anti-PKC beta Rabbit mAb Product Manual

Cat No: GMA4458

Source: Rabbit

Reactivity: H, M, R

Applications: WB, IH, IF/IC

*Application Key:

H - Human, M - Mouse, R - Rat, B - Bovine, C - Chicken, D - Dog, G - Goat, Mk - Monkey, P - Pig, Rb - Rabbit, S - Sheep, Z - Zebrafish

*Species Reactivity Key:

E- ELISA, WB - Western blot, IH - Immunohistochemistry, IF - Immunofluorescence, FC - Flow cytometry, IC - Immunocytochemistry, IP - Immunoprecipitation, ChIP - Chromatin Immunoprecipitation, EMSA - Electrophoretic Mobility Shift Assay, BL - Blocking, SE - Sandwich ELISA, CBE - Cell-based ELISA, RNAi - RNA interference

Datasheet

Description: Recombinant rabbit monoclonal antibody to PKC beta

Immunogen: A synthesized peptide derived from human PKC beta

Purification: The antibody was purified by immunogen affinity chromatography.

Clonality: Monoclonal

Form: Liquid in PBS, pH 7.4, containing 50% glycerol, 0.2% BSA and 0.01% sodium azide.

Dilution: WB (1/500 - 1/1000), IH (1/50 - 1/100), IF/IC (1/50 - 1/100)

Gene Symbol: PRKCB

Alternative Names: PKCB; PRKCB1; Protein kinase C beta type; PKC-B; PKC-beta

Entrez Gene (Human): 5579;

Entrez Gene (Mouse): 18751;

Entrez Gene (Rat): 25023;

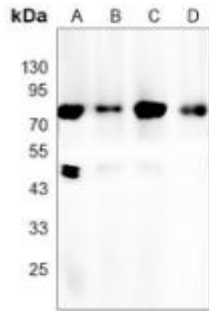
SwissProt (Human): P05771;

SwissProt (Mouse): P68404;

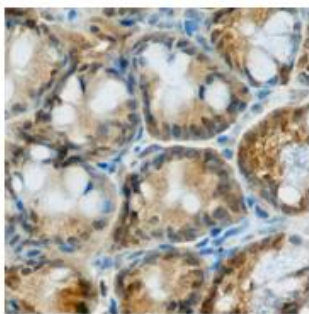
SwissProt (Rat): P68403;

Storage/Stability: Shipped at 4°C. Upon delivery aliquot and store at -20°C for one year. Avoid freeze/thaw cycles.

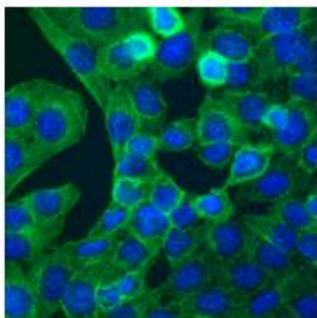
Validation



Western blot analysis of PKC beta expression in K562 (A), Jurkat (B), H1792 (C), mouse brain (D) whole cell lysates. (Predicted band size: 77 kD; Observed band size: 77 kD)



Immunohistochemical analysis of PKC beta staining in mouse colon formalin fixed paraffin embedded tissue section. The section was pre-treated using heat mediated antigen retrieval with sodium citrate buffer (pH 6.0). The section was then incubated with the antibody at room temperature and detected using an HRP conjugated compact polymer system. DAB was used as the chromogen. The section was then counterstained with haematoxylin and mounted with DPX.



Immunofluorescent analysis of PKC beta staining in HeLa cells. Formalin-fixed cells were permeabilized with 0.1% Triton X-100 in TBS for 5-10 minutes and blocked with 3% BSA-PBS for 30 minutes at room temperature. Cells were probed with the primary antibody in 3% BSA-PBS and incubated overnight at 4 ° C in a humidified chamber. Cells were washed with PBST and incubated with a AF488-conjugated secondary antibody (green) in PBS at room temperature in the dark. DAPI was used to stain the cell nuclei (blue).

官方网址: <http://www.genscion.com.cn>

订货热线: 4006169114, 020-84224925

Email: whiga22@126.com

