

## Recombinant Anti-CD206 Rabbit mAb Product Manual

**Cat No: GMA9002**

Source: Rabbit

Reactivity: H, M, R

Applications: WB, IH, IF/IC, IP

\*Application Key:

H - Human, M - Mouse, R - Rat, B - Bovine, C - Chicken, D - Dog, G - Goat, Mk - Monkey, P - Pig, Rb - Rabbit, S - Sheep, Z - Zebrafish

\*Species Reactivity Key:

E - ELISA, WB - Western blot, IH - Immunohistochemistry, IF - Immunofluorescence, FC - Flow cytometry, IC - Immunocytochemistry, IP - Immunoprecipitation, ChIP - Chromatin Immunoprecipitation, EMSA - Electrophoretic Mobility Shift Assay, BL - Blocking, SE - Sandwich ELISA, CBE - Cell-based ELISA, RNAi - RNA interference

### Datasheet

Description: Recombinant rabbit monoclonal antibody to CD206

Immunogen: Recombinant fusion protein of human CD206. The exact sequence is proprietary.

Purification: The antibody was purified by immunogen affinity chromatography.

Clonality: Monoclonal

Form: Liquid in PBS, pH 7.3, 50% glycerol, 0.05% BSA, and 0.05% Proclin300.

Dilution: WB (1/500 - 1/2000), IH (1/100 - 1/300), IF/IC (1/100 - 1/300), IP (1/50 - 1/100)

Gene Symbol: MRC1

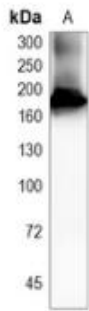
Alternative Names: CLEC13D; CLEC13DL; MRC1L1; Macrophage mannose receptor 1; MMR; C-type lectin domain family 13 member D; C-type lectin domain family 13 member D-like; Macrophage mannose receptor 1-like protein 1; CD206

Entrez Gene (Human): 4360;

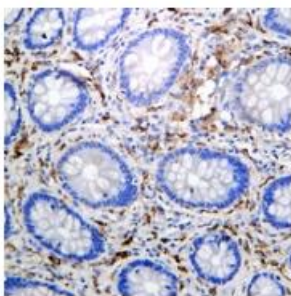
SwissProt (Human): P22897;

Storage/Stability: Shipped at 4°C. Upon delivery aliquot and store at -20°C for one year. Avoid freeze/thaw cycles.

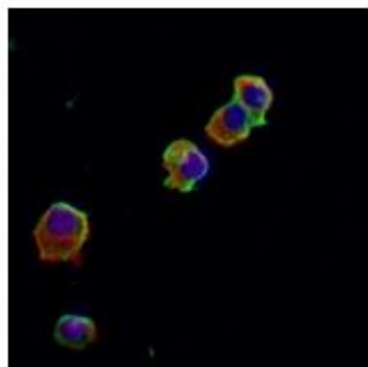
## Validation



Western blot analysis of CD206 expression in mouse liver (A) whole cell lysates. (Predicted band size: 166 kD; Observed band size: 190 kD)



Immunohistochemical analysis of CD206 staining in human colon formalin fixed paraffin embedded tissue section. The section was pre-treated using heat mediated antigen retrieval with sodium citrate buffer (pH 6.0). The section was then incubated with the antibody at room temperature and detected using an HRP conjugated compact polymer system. DAB was used as the chromogen. The section was then counterstained with haematoxylin and mounted with DPX.



Immunofluorescent analysis of CD206 staining in RAW264.7 cells. Formalin-fixed cells were permeabilized with 0.1% Triton X-100 in TBS for 5-10 minutes and blocked with 3% BSA-PBS for 30 minutes at room temperature. Cells were probed with the primary antibody in 3% BSA-PBS and incubated overnight at 4 °C in a humidified chamber. Cells were washed with PBST and incubated with an AF488-conjugated secondary antibody (green) in PBS at room temperature in the dark. Phalloidin - AF594 was used to stain Actin filaments (red). DAPI was used to stain the cell nuclei (blue).

官方网址 : <http://www.genesion.com.cn>

订货热线 : 4006169114、020-84224925

Email: [whiga22@126.com](mailto:whiga22@126.com)

