

Anti-HSC70 Antibody [KO/KD Validated] Product Manual

Cat No: GPA1555

Source: Rabbit

Reactivity: H, M, R, B, C

Applications: WB, IF/IC

*Application Key:

H - Human, M - Mouse, R - Rat, B - Bovine, C - Chicken, D - Dog, G - Goat, Mk - Monkey, P - Pig, Rb - Rabbit, S - Sheep, Z - Zebrafish

*Species Reactivity Key:

E - ELISA, WB - Western blot, IH - Immunohistochemistry, IF - Immunofluorescence, FC - Flow cytometry, IC - Immunocytochemistry, IP - Immunoprecipitation, ChIP - Chromatin Immunoprecipitation, EMSA - Electrophoretic Mobility Shift Assay, BL - Blocking, SE - Sandwich ELISA, CBE - Cell-based ELISA, RNAi - RNA interference

Datasheet

Description: Rabbit polyclonal antibody to HSC70

Immunogen: KLH-conjugated synthetic peptide encompassing a sequence within the center region of human HSC70. The exact sequence is proprietary.

Purification: The antibody was purified by immunogen affinity chromatography.

Clonality: Polyclonal

Form: Liquid in 0.42% Potassium phosphate, 0.87% Sodium chloride, pH 7.3, 30% glycerol, and 0.01% sodium azide.

Dilution: WB (1/500 - 1/1000), IF/IC (1/50 - 1/200)

Gene Symbol: HSPA8

Alternative Names: HSC70; HSP73; HSPA10; Heat shock cognate 71 kDa protein; Heat shock 70 kDa protein 8;

Lipopolysaccharide-associated protein 1; LAP-1; LPS-associated protein 1

Entrez Gene (Human): 3312;

Entrez Gene (Mouse): 15481;

Entrez Gene (Rat): 24468;

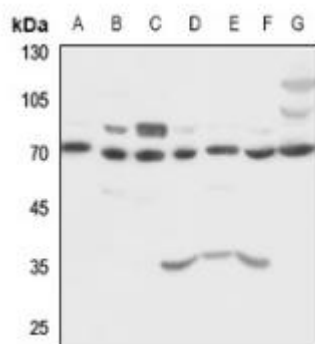
SwissProt (Human): P11142;

SwissProt (Mouse): P63017;

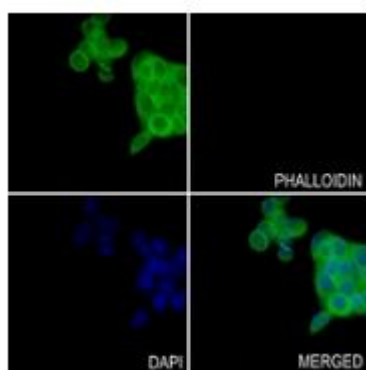
SwissProt (Rat): P63018;

Storage/Stability: Shipped at 4°C. Upon delivery aliquot and store at -20°C for one year. Avoid freeze/thaw cycles.

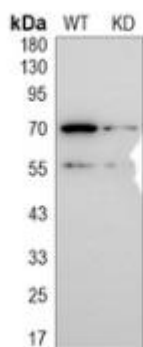
Validation



Western blot analysis of HSC70 expression in HEK293T (A), Hela (B), H460 (C), mouse heart (D), mouse brain (E), rat heart (F), rat muscle (G) whole cell lysates. (Predicted band size: 70 kD; Observed band size: 70 kD)



Immunofluorescent analysis of HSC70 staining in MCF7 cells. Formalin-fixed cells were permeabilized with 0.1% Triton X-100 in TBS for 5-10 minutes and blocked with 3% BSA-PBS for 30 minutes at room temperature. Cells were probed with the primary antibody in 3% BSA-PBS and incubated overnight at 4 °C in a humidified chamber. Cells were washed with PBST and incubated with a AF488-conjugated secondary antibody (green) in PBS at room temperature in the dark. Phalloidin - AF594 was used to stain Actin filaments (red). DAPI was used to stain the cell nuclei (blue).



Western blot analysis of HSC70 expression in wild type (WT) and knockdown (KD) HEK293T cell lysates.

