

# Recombinant Anti-Smooth Muscle Actin Rabbit mAb

## Product Manual

**Cat No: GMA4231**

Source: Rabbit

Reactivity: H, M, R, C

Applications: WB, IH, IF/IC

\*Application Key:

H - Human, M - Mouse, R - Rat, B - Bovine, C - Chicken, D - Dog, G - Goat, Mk - Monkey, P - Pig, Rb - Rabbit, S - Sheep, Z - Zebrafish

\*Species Reactivity Key:

E- ELISA, WB - Western blot, IH - Immunohistochemistry, IF - Immunofluorescence, FC - Flow cytometry, IC -

Immunocytochemistry, IP - Immunoprecipitation, ChIP - Chromatin Immunoprecipitation, EMSA - Electrophoretic Mobility Shift Assay, BL - Blocking, SE - Sandwich ELISA, CBE - Cell-based ELISA, RNAi - RNA interference

### Datasheet

Description: Recombinant rabbit monoclonal antibody to Smooth Muscle Actin

Immunogen: KLH-conjugated synthetic peptide encompassing a sequence within human Smooth Muscle Actin. The exact sequence is proprietary.

Purification: The antibody was purified by immunogen affinity chromatography.

Clonality: Monoclonal

Form: Liquid in PBS, pH 7.4, containing 50% glycerol, 0.2% BSA and 0.01% sodium azide.

Dilution: WB (1/500 - 1/1000), IH (1/50 - 1/200), IF/IC (1/50 - 1/200)

Gene Symbol: ACTA2

Alternative Names: ACTSA; ACTVS; Actin, aortic smooth muscle; Alpha-actin-2; Cell growth-inhibiting gene 46 protein

Entrez Gene (Human): 59;

Entrez Gene (Mouse): 11475;

Entrez Gene (Rat): 81633;

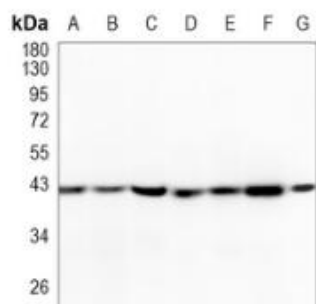
SwissProt (Human): P62736;

SwissProt (Mouse): P62737;

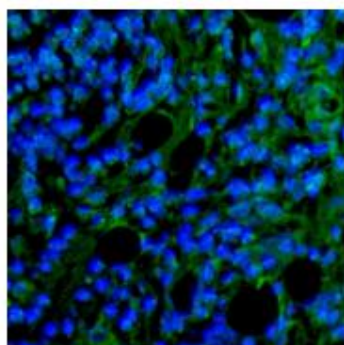
SwissProt (Rat): P62738;

Storage/Stability: Shipped at 4°C. Upon delivery aliquot and store at -20°C for one year. Avoid freeze/thaw cycles. Storage/Stability: Shipped at 4°C. Upon delivery aliquot and store at -20°C for one year. Avoid freeze/thaw cycles. Storage/Stability: Shipped at 4°C. Upon delivery aliquot and store at -20°C for one year. Avoid freeze/thaw cycles.

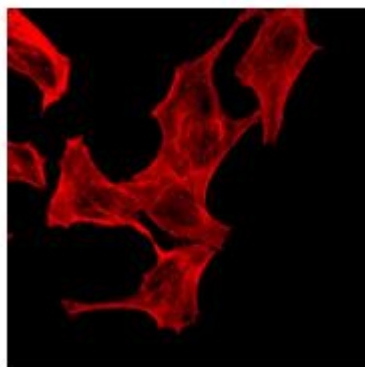
## Validation



Western blot analysis of Smooth Muscle Actin expression in HEK293T (A), HepG2 (B), H1792 (C), mouse kidney (D), mouse muscle (E), rat kidney (F), rat muscle (G) whole cell lysates. (Predicted band size: 42 kD; Observed band size: 42 kD)



Immunohistochemical analysis of Smooth Muscle Actin staining in human colon cancer formalin fixed paraffin embedded tissue section. The section was pre-treated using heat mediated antigen retrieval with sodium citrate buffer (pH 6.0). The section was then incubated with the antibody at room temperature and detected using an HRP conjugated compact polymer system. Tyramide-AF488 (green) was used as the chromogen. The section was then counterstained with DAPI (blue).



Immunofluorescent analysis of Smooth Muscle Actin staining in MCF7 cells. Formalin-fixed cells were permeabilized with 0.1% Triton X-100 in TBS for 5-10 minutes and blocked with 3% BSA-PBS for 30 minutes at room temperature. Cells were probed with the primary antibody in 3% BSA-PBS and incubated overnight at 4 °C in a humidified chamber. Cells were washed with PBST and incubated with an AF594-conjugated secondary antibody (red) in PBS at room temperature in the dark.

官方网址 : <http://www.genesion.com.cn>

订货热线 : 4006169114、020-84224925

Email: [whigs22@126.com](mailto:whigs22@126.com)

