

Recombinant Anti-Lipin 1 Rabbit mAb Product Manual

Cat No: GMA4295

Source: Rabbit

Reactivity: H

Applications: WB

*Application Key:

H - Human, M - Mouse, R - Rat, B - Bovine, C - Chicken, D - Dog, G - Goat, Mk - Monkey, P - Pig, Rb - Rabbit, S - Sheep, Z - Zebrafish

*Species Reactivity Key:

E - ELISA, WB - Western blot, IH - Immunohistochemistry, IF - Immunofluorescence, FC - Flow cytometry, IC - Immunocytochemistry, IP - Immunoprecipitation, ChIP - Chromatin Immunoprecipitation, EMSA - Electrophoretic Mobility Shift Assay, BL - Blocking, SE - Sandwich ELISA, CBE - Cell-based ELISA, RNAi - RNA interference

Datasheet

Description: Recombinant rabbit monoclonal antibody to Lipin 1

Immunogen: KLH-conjugated synthetic peptide encompassing a sequence within human Lipin 1. The exact sequence is proprietary.

Purification: The antibody was purified by immunogen affinity chromatography.

Clonality: Monoclonal

Form: Liquid in PBS, pH 7.4, containing 50% glycerol, 0.2% BSA and 0.01% sodium azide.

Dilution: WB (1/500 - 1/1000)

Gene Symbol: LPIN1

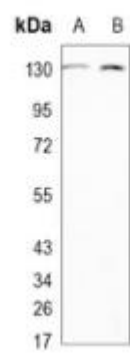
Alternative Names: KIAA0188; Phosphatidate phosphatase LPIN1; Lipin-1

Entrez Gene (Human): 23175;

SwissProt (Human): Q14693;

Storage/Stability: Shipped at 4°C. Upon delivery aliquot and store at -20°C for one year. Avoid freeze/thaw cycles.

Validation



Western blot analysis of Lipin 1 expression in HEK293T (A), THP1 (B) whole cell lysates. (Predicted band size: 98 kD; Observed band size: 130 kD)

