

Anti-FAP alpha Antibody Product Manual

Cat No: GPA7036

Source: Rabbit

Reactivity: H, M, R, B

Applications: WB, IH, IF/IC

*Application Key:

H - Human, M - Mouse, R - Rat, B - Bovine, C - Chicken, D - Dog, G - Goat, Mk - Monkey, P - Pig, Rb - Rabbit, S - Sheep, Z - Zebrafish

*Species Reactivity Key:

E- ELISA, WB - Western blot, IH - Immunohistochemistry, IF - Immunofluorescence, FC - Flow cytometry, IC - Immunocytochemistry, IP - Immunoprecipitation, ChIP - Chromatin Immunoprecipitation, EMSA - Electrophoretic Mobility Shift Assay, BL - Blocking, SE - Sandwich ELISA, CBE - Cell-based ELISA, RNAi - RNA interference

Datasheet

Description: Rabbit polyclonal antibody to FAP alpha

Immunogen: KLH-conjugated synthetic peptide encompassing a sequence within the center region of human FAP alpha. The exact sequence is proprietary.

Purification: The antibody was purified by immunogen affinity chromatography.

Clonality: Polyclonal

Form: Liquid in 0.42% Potassium phosphate, 0.87% Sodium chloride, pH 7.3, 30% glycerol, and 0.01% sodium azide.

Dilution: WB (1/500 - 1/1000), IH (1/100 - 1/200), IF/IC (1/100 - 1/500)

Gene Symbol: FAP

Alternative Names: Seprase; 170 kDa melanoma membrane-bound gelatinase; Fibroblast activation protein alpha; Integral membrane serine protease

Entrez Gene (Human): 2191;

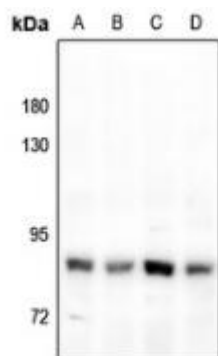
Entrez Gene (Mouse): 14089;

SwissProt (Human): Q12884;

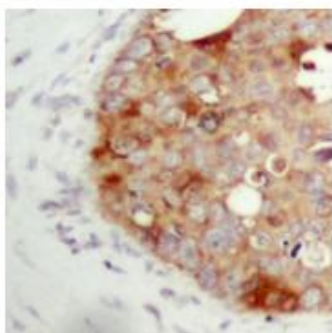
SwissProt (Mouse): P97321;

Storage/Stability: Shipped at 4°C. Upon delivery aliquot and store at -20°C for one year. Avoid freeze/thaw cycles.

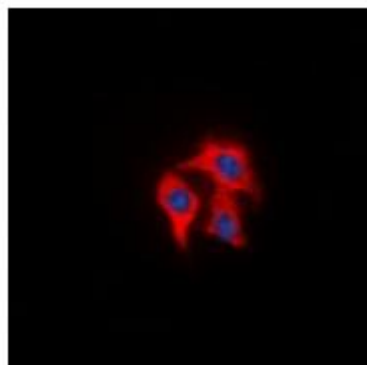
Validation



Western blot analysis of FAP alpha expression in PC3 (A), H9C2 (B), CT26 (C), HeLa (D) whole cell lysates. (Predicted band size: 87 kD; Observed band size: 88 kD)



Immunohistochemical analysis of FAP alpha staining in human prostate cancer formalin fixed paraffin embedded tissue section. The section was pre-treated using heat mediated antigen retrieval with sodium citrate buffer (pH 6.0). The section was then incubated with the antibody at room temperature and detected using an HRP conjugated compact polymer system. DAB was used as the chromogen. The section was then counterstained with haematoxylin and mounted with DPX.



Immunofluorescent analysis of FAP alpha staining in HeLa cells. Formalin-fixed cells were permeabilized with 0.1% Triton X-100 in TBS for 5-10 minutes and blocked with 3% BSA-PBS for 30 minutes at room temperature. Cells were probed with the primary antibody in 3% BSA-PBS and incubated overnight at 4 °C in a hidified chamber. Cells were washed with PBST and incubated with a DyLight 594-conjugated secondary antibody (red) in PBS at room temperature in the dark. DAPI was used to stain the cell nuclei (blue).

官方网址: <http://www.genscion.com.cn>

订货热线: 4006169114, 020-84224925

Email: whiga22@126.com

