

Anti-Ly6a Antibody Product Manual

Cat No: GPA6691

Source: Rabbit

Reactivity: M, R

Applications: WB

*Application Key:

H - Human, M - Mouse, R - Rat, B - Bovine, C - Chicken, D - Dog, G - Goat, Mk - Monkey, P - Pig, Rb - Rabbit, S - Sheep, Z - Zebrafish

*Species Reactivity Key:

E- ELISA, WB - Western blot, IH - Immunohistochemistry, IF - Immunofluorescence, FC - Flow cytometry, IC - Immunocytochemistry, IP - Immunoprecipitation, ChIP - Chromatin Immunoprecipitation, EMSA - Electrophoretic Mobility Shift Assay, BL - Blocking, SE - Sandwich ELISA, CBE - Cell-based ELISA, RNAi - RNA interference

Datasheet

Description: Rabbit polyclonal antibody to Ly6a

Immunogen: KLH-conjugated synthetic peptide encompassing a sequence within the center region of mouse Ly6a. The exact sequence is proprietary.

Purification: The antibody was purified by immunogen affinity chromatography.

Clonality: Polyclonal

Form: Liquid in 0.42% Potassium phosphate, 0.87% Sodium chloride, pH 7.3, 30% glycerol, and 0.01% sodium azide.

Dilution: WB (1/500 - 1/1000)

Gene Symbol: Ly6a

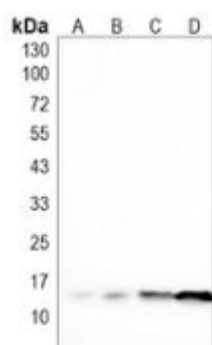
Alternative Names: Ly6; Lymphocyte antigen 6A-2/6E-1; Ly-6A.2/Ly-6E.1; Stem cell antigen 1 (SCA-1); T-cell-activating protein (TAP)

Entrez Gene (Mouse): 110454;

SwissProt (Mouse): P05533;

Storage/Stability: Shipped at 4°C. Upon delivery aliquot and store at -20°C for one year. Avoid freeze/thaw cycles.

Validation



Western blot analysis of Ly6a expression in mouse lung (A), mouse liver (B), rat lung (C), rat liver (D) whole cell lysates.
(Predicted band size: 14 kD; Observed band size: 14 kD)

官方网址 : <http://www.genesion.com.cn>

订货热线 : 4006169114、020-84224925

Email: whiga22@126.com

