

Anti-SLC25A11 Antibody Product Manual

Cat No: GPA2275

Source: Rabbit

Reactivity: H, M, R, Mk

Applications: WB, IF/IC

*Application Key:

H - Human, M - Mouse, R - Rat, B - Bovine, C - Chicken, D - Dog, G - Goat, Mk - Monkey, P - Pig, Rb - Rabbit, S - Sheep, Z - Zebrafish

*Species Reactivity Key:

E- ELISA, WB - Western blot, IH - Immunohistochemistry, IF - Immunofluorescence, FC - Flow cytometry, IC - Immunocytochemistry, IP - Immunoprecipitation, ChIP - Chromatin Immunoprecipitation, EMSA - Electrophoretic Mobility Shift Assay, BL - Blocking, SE - Sandwich ELISA, CBE - Cell-based ELISA, RNAi - RNA interference

Datasheet

Description: Rabbit polyclonal antibody to SLC25A11

Immunogen: KLH-conjugated synthetic peptide encompassing a sequence within the center region of human SLC25A11. The exact sequence is proprietary.

Purification: The antibody was purified by immunogen affinity chromatography.

Clonality: Polyclonal

Form: Liquid in 0.42% Potassium phosphate, 0.87% Sodium chloride, pH 7.3, 30% glycerol, and 0.01% sodium azide.

Dilution: WB (1/500 - 1/1000), IF/IC (1/50 - 1/200)

Gene Symbol: SLC25A11

Alternative Names: SLC20A4; Mitochondrial 2-oxoglutarate/malate carrier protein; OGCP; Solute carrier family 25 member 11

Entrez Gene (Human): 8402;

Entrez Gene (Mouse): 67863;

Entrez Gene (Rat): 64201;

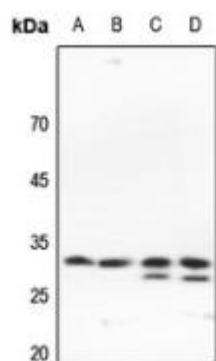
SwissProt (Human): Q02978;

SwissProt (Mouse): Q9CR62;

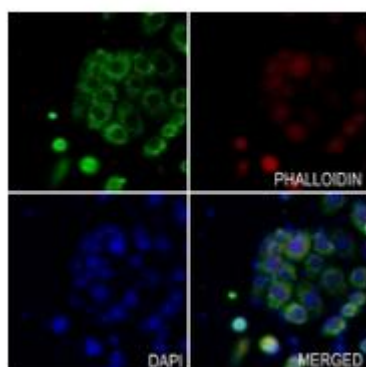
SwissProt (Rat): P97700;

Storage/Stability: Shipped at 4°C. Upon delivery aliquot and store at -20°C for one year. Avoid freeze/thaw cycles.

Validation



Western blot analysis of SLC25A11 expression in HEK293T (A), Hela (B), rat kidney (C), rat spleen (D) whole cell lysates. (Predicted band size: 34 kD; Observed band size: 34; 28 kD)



Immunofluorescent analysis of SLC25A11 staining in Hela cells. Formalin-fixed cells were permeabilized with 0.1% Triton X-100 in TBS for 5-10 minutes and blocked with 3% BSA-PBS for 30 minutes at room temperature. Cells were probed with the primary antibody in 3% BSA-PBS and incubated overnight at 4 °C in a humidified chamber. Cells were washed with PBST and incubated with a AF488-conjugated secondary antibody (green) in PBS at room temperature in the dark. Phalloidin - AF594 was used to stain Actin filaments (red). DAPI was used to stain the cell nuclei (blue).

官方网址 : <http://www.genesion.com.cn>

订货热线 : 4006169114、020-84224925

Email: whiga22@126.com

