

Anti-14-3-3 gamma Antibody [KO/KD Validated] Product Manual

Cat No: GPA2242

Source: Rabbit

Reactivity: H, M, R, B, C, Z

Applications: WB, IH, IF/IC

*Application Key:

H - Human, M - Mouse, R - Rat, B - Bovine, C - Chicken, D - Dog, G - Goat, Mk - Monkey, P - Pig, Rb - Rabbit, S - Sheep, Z - Zebrafish

*Species Reactivity Key:

E- ELISA, WB - Western blot, IH - Immunohistochemistry, IF - Immunofluorescence, FC - Flow cytometry, IC - Immunocytochemistry, IP - Immunoprecipitation, ChIP - Chromatin Immunoprecipitation, EMSA - Electrophoretic Mobility Shift Assay, BL - Blocking, SE - Sandwich ELISA, CBE - Cell-based ELISA, RNAi - RNA interference

Datasheet

Description: Rabbit polyclonal antibody to 14-3-3 gamma

Immunogen: KLH-conjugated synthetic peptide encompassing a sequence within the center region of human 14-3-3 gamma. The exact sequence is proprietary.

Purification: The antibody was purified by immunogen affinity chromatography.

Clonality: Polyclonal

Form: Liquid in 0.42% Potassium phosphate, 0.87% Sodium chloride, pH 7.3, 30% glycerol, and 0.01% sodium azide.

Dilution: WB (1/500 - 1/1000), IH (1/50 - 1/100), IF/IC (1/50 - 1/200)

Gene Symbol: YWHAG

Alternative Names: 14-3-3 protein gamma; Protein kinase C inhibitor protein 1; KCIP-1

Entrez Gene (Human): 7532;

Entrez Gene (Mouse): 22628;

Entrez Gene (Rat): 56010;

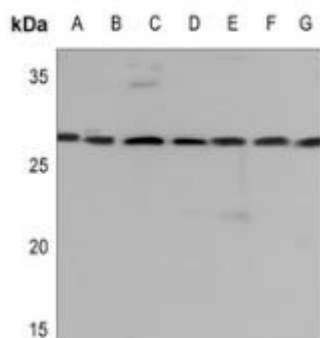
SwissProt (Human): P61981;

SwissProt (Mouse): P61982;

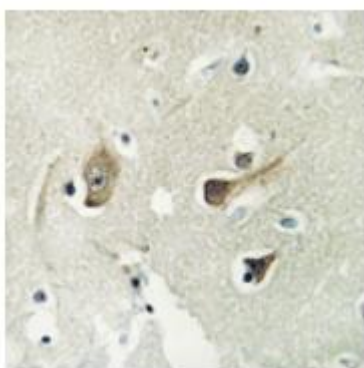
SwissProt (Rat): P61983;

Storage/Stability: Shipped at 4°C. Upon delivery aliquot and store at -20°C for one year. Avoid freeze/thaw cycles.

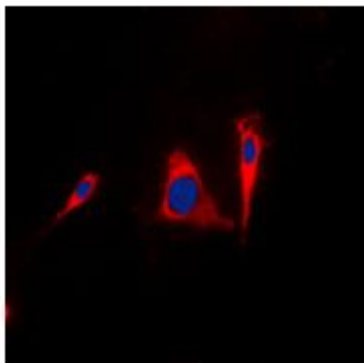
Validation



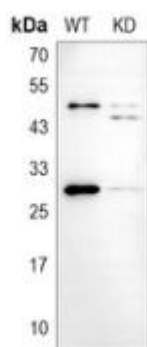
Western blot analysis of 14-3-3 gamma expression in HEK293T (A), A549 (B), MCF7 (C), mouse lung (D), mouse liver (E), rat lung (F), rat liver (G) whole cell lysates. (Predicted band size: 28 kD; Observed band size: 28 kD)



Immunohistochemical analysis of 14-3-3 gamma staining in human brain formalin fixed paraffin embedded tissue section. The section was pre-treated using heat mediated antigen retrieval with sodium citrate buffer (pH 6.0). The section was then incubated with the antibody at room temperature and detected using an HRP conjugated compact polymer system. DAB was used as the chromogen. The section was then counterstained with haematoxylin and mounted with DPX.



Immunofluorescent analysis of 14-3-3 gamma staining in A431 cells. Formalin-fixed cells were permeabilized with 0.1% Triton X-100 in TBS for 5-10 minutes and blocked with 3% BSA-PBS for 30 minutes at room temperature. Cells were probed with the primary antibody in 3% BSA-PBS and incubated overnight at 4 °C in a humidified chamber. Cells were washed with PBST and incubated with a DyLight 594-conjugated secondary antibody (red) in PBS at room temperature in the dark. DAPI was used to stain the cell nuclei (blue).



Western blot analysis of 14-3-3 gamma expression in wild type (WT) and knockdown (KD) HeLa cell lysates.

官方网址 : <http://www.genscion.com.cn>

订货热线 : 4006169114、020-84224925

Email: whiga22@126.com

