

Anti-ATG4B Antibody Product Manual

Cat No: GPA3782

Source: Rabbit

Reactivity: H, M, R, Mk

Applications: WB, IH

*Application Key:

H - Human, M - Mouse, R - Rat, B - Bovine, C - Chicken, D - Dog, G - Goat, Mk - Monkey, P - Pig, Rb - Rabbit, S - Sheep, Z - Zebrafish

*Species Reactivity Key:

E- ELISA, WB - Western blot, IH - Immunohistochemistry, IF - Immunofluorescence, FC - Flow cytometry, IC - Immunocytochemistry, IP - Immunoprecipitation, ChIP - Chromatin Immunoprecipitation, EMSA - Electrophoretic Mobility Shift Assay, BL - Blocking, SE - Sandwich ELISA, CBE - Cell-based ELISA, RNAi - RNA interference

Datasheet

Description: Rabbit polyclonal antibody to ATG4B

Immunogen: KLH-conjugated synthetic peptide encompassing a sequence within the center region of human ATG4B. The exact sequence is proprietary.

Purification: The antibody was purified by immunogen affinity chromatography.

Clonality: Polyclonal

Form: Liquid in 0.42% Potassium phosphate, 0.87% Sodium chloride, pH 7.3, 30% glycerol, and 0.01% sodium azide.

Dilution: WB (1/500 - 1/1000), IH (1/100 - 1/200)

Gene Symbol: ATG4B

Alternative Names: APG4B; AUTL1; KIAA0943; Cysteine protease ATG4B; AUT-like 1 cysteine endopeptidase; Autophagin-1; Autophagy-related cysteine endopeptidase 1; Autophagy-related protein 4 homolog B; hAPG4B

Entrez Gene (Human): 23192;

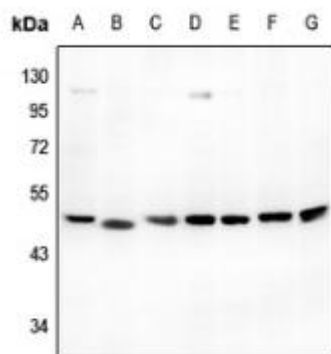
Entrez Gene (Mouse): 66615;

SwissProt (Human): Q9Y4P1;

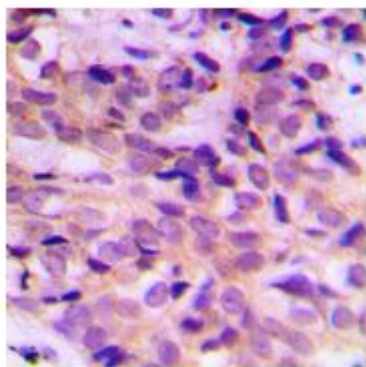
SwissProt (Mouse): Q8BGE6;

Storage/Stability: Shipped at 4°C. Upon delivery aliquot and store at -20°C for one year. Avoid freeze/thaw cycles.

Validation



Western blot analysis of ATG4B expression in mouse testis (A), rat testis (B), C6 (C), HeLa (D), PC3 (E), DLD (F), U87MG (G) whole cell lysates. (Predicted band size: 31; 37; 42; 44; 52 kD; Observed band size: 48 kD)



Immunohistochemical analysis of ATG4B staining in human breast cancer formalin fixed paraffin embedded tissue section. The section was pre-treated using heat mediated antigen retrieval with sodium citrate buffer (pH 6.0). The section was then incubated with the antibody at room temperature and detected using an HRP conjugated compact polymer system. DAB was used as the chromogen. The section was then counterstained with haematoxylin and mounted with DPX.

官方网址 : <http://www.genscion.com.cn>

订货热线 : 4006169114、020-84224925

Email: whiga22@126.com

