

Anti-HSP90 beta Antibody [KO/KD Validated] Product Manual

Cat No: GPA4432

Source: Rabbit

Reactivity: H, M, R, Mk

Applications: WB, IH, IF/IC, IP

*Application Key:

H - Human, M - Mouse, R - Rat, B - Bovine, C - Chicken, D - Dog, G - Goat, Mk - Monkey, P - Pig, Rb - Rabbit, S - Sheep, Z - Zebrafish

*Species Reactivity Key:

E- ELISA, WB - Western blot, IH - Immunohistochemistry, IF - Immunofluorescence, FC - Flow cytometry, IC - Immunocytochemistry, IP - Immunoprecipitation, ChIP - Chromatin Immunoprecipitation, EMSA - Electrophoretic Mobility Shift Assay, BL - Blocking, SE - Sandwich ELISA, CBE - Cell-based ELISA, RNAi - RNA interference

Datasheet

Description: Rabbit polyclonal antibody to HSP90 beta

Immunogen: KLH-conjugated synthetic peptide encompassing a sequence within the center region of human HSP90 beta. The exact sequence is proprietary.

Purification: The antibody was purified by immunogen affinity chromatography.

Clonality: Polyclonal

Form: Liquid in 0.42% Potassium phosphate, 0.87% Sodium chloride, pH 7.3, 30% glycerol, and 0.01% sodium azide.

Dilution: WB (1/500 - 1/1000), IH (1/100 - 1/200), IF/IC (1/100 - 1/500), IP (1/10 - 1/100)

Gene Symbol: HSP90AB1

Alternative Names: HSP90B; HSPC2; HSPCB; Heat shock protein HSP 90-beta; HSP 90; Heat shock 84 kDa; HSP 84; HSP84

Entrez Gene (Human): 3326;

Entrez Gene (Mouse): 15516;

Entrez Gene (Rat): 301252;

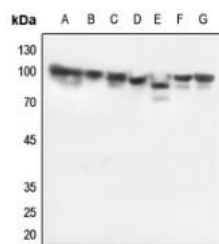
SwissProt (Human): P08238;

SwissProt (Mouse): P11499;

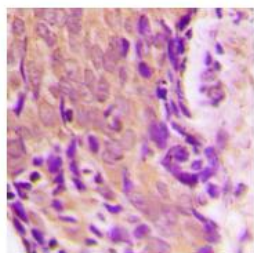
SwissProt (Rat): P34058;

Storage/Stability: Shipped at 4°C. Upon delivery aliquot and store at -20°C for one year. Avoid freeze/thaw cycles.

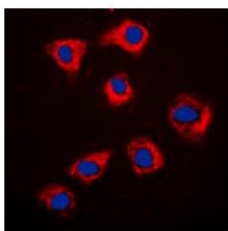
Validation



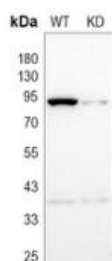
Western blot analysis of HSP90 beta expression in HEK293T (A), Hela (B), H446 (C), mouse testis (D), mouse lung (E), rat testis (F), rat lung (G) whole cell lysates. (Predicted band size: 83 kD; Observed band size: 90 kD)



Immunohistochemical analysis of HSP90 beta staining in human prostate cancer formalin fixed paraffin embedded tissue section. The section was pre-treated using heat mediated antigen retrieval with sodium citrate buffer (pH 6.0). The section was then incubated with the antibody at room temperature and detected using an HRP conjugated compact polymer system. DAB was used as the chromogen. The section was then counterstained with haematoxylin and mounted with DPX.



Immunofluorescent analysis of HSP90 beta staining in MCF7 cells. Formalin-fixed cells were permeabilized with 0.1% Triton X-100 in TBS for 5-10 minutes and blocked with 3% BSA-PBS for 30 minutes at room temperature. Cells were probed with the primary antibody in 3% BSA-PBS and incubated overnight at 4 °C in a humidified chamber. Cells were washed with PBST and incubated with a DyLight 594-conjugated secondary antibody (red) in PBS at room temperature in the dark. DAPI was used to stain the cell nuclei (blue).



Western blot analysis of HSP90 beta expression in wild type (WT) and knockdown (KD) HEK293T cell lysates.

