

Anti-AMPK beta 1 Antibody Product Manual

Cat No: GPA4494

Source: Rabbit

Reactivity: H, M, R, B, P

Applications: WB, IH, IF/IC

*Application Key:

H - Human, M - Mouse, R - Rat, B - Bovine, C - Chicken, D - Dog, G - Goat, Mk - Monkey, P - Pig, Rb - Rabbit, S - Sheep, Z - Zebrafish

*Species Reactivity Key:

E- ELISA, WB - Western blot, IH - Immunohistochemistry, IF - Immunofluorescence, FC - Flow cytometry, IC - Immunocytochemistry, IP - Immunoprecipitation, ChIP - Chromatin Immunoprecipitation, EMSA - Electrophoretic Mobility Shift Assay, BL - Blocking, SE - Sandwich ELISA, CBE - Cell-based ELISA, RNAi - RNA interference

Datasheet

Description: Rabbit polyclonal antibody to AMPK beta 1

Immunogen: KLH-conjugated synthetic peptide encompassing a sequence within the center region of human AMPK beta 1. The exact sequence is proprietary.

Purification: The antibody was purified by immunogen affinity chromatography.

Clonality: Polyclonal

Form: Liquid in 0.42% Potassium phosphate, 0.87% Sodium chloride, pH 7.3, 30% glycerol, and 0.01% sodium azide.

Dilution: WB (1/500 - 1/1000), IH (1/50 - 1/100), IF/IC (1/50 - 1/200)

Gene Symbol: PRKAB1

Alternative Names: AMPK; 5'-AMP-activated protein kinase subunit beta-1; AMPK subunit beta-1; AMPKb

Entrez Gene (Human): 5564;

Entrez Gene (Mouse): 19079;

Entrez Gene (Rat): 83803;

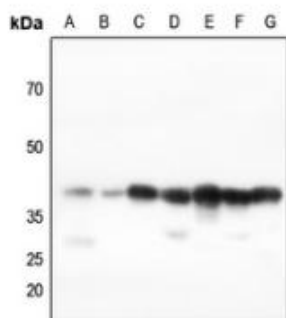
SwissProt (Human): Q9Y478;

SwissProt (Mouse): Q9R078;

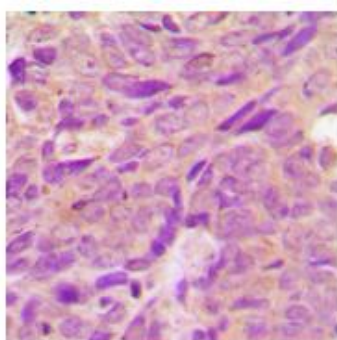
SwissProt (Rat): P80386;

Storage/Stability: Shipped at 4°C. Upon delivery aliquot and store at -20°C for one year. Avoid freeze/thaw cycles.

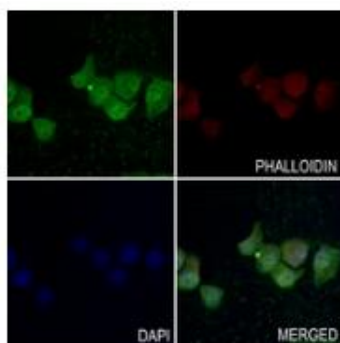
Validation



Western blot analysis of AMPK beta 1 expression in HEK293T (A), Hela (B), mouse lung (C), mouse heart (D), mouse spleen (E), rat heart (F), rat spleen (G) whole cell lysates. (Predicted band size: 30 kD; Observed band size: 38 kD)



Immunohistochemical analysis of AMPK beta 1 staining in human breast cancer formalin fixed paraffin embedded tissue section. The section was pre-treated using heat mediated antigen retrieval with sodium citrate buffer (pH 6.0). The section was then incubated with the antibody at room temperature and detected using an HRP conjugated compact polymer system. DAB was used as the chromogen. The section was then counterstained with haematoxylin and mounted with DPX.



Immunofluorescent analysis of AMPK beta 1 staining in LO2 cells. Formalin-fixed cells were permeabilized with 0.1% Triton X-100 in TBS for 5-10 minutes and blocked with 3% BSA-PBS for 30 minutes at room temperature. Cells were probed with the primary antibody in 3% BSA-PBS and incubated overnight at 4 °C in a humidified chamber. Cells were washed with PBST and incubated with a AF488-conjugated secondary antibody (green) in PBS at room temperature in the dark. Phalloidin - AF594 was used to stain Actin filaments (red). DAPI was used to stain the cell nuclei (blue).

