

## Anti-PKC alpha Antibody [KO/KD Validated] Product Manual

**Cat No: GPA5525**

Source: Rabbit

Reactivity: H, M, R, B, Mk

Applications: WB, IH

\*Application Key:

H - Human, M - Mouse, R - Rat, B - Bovine, C - Chicken, D - Dog, G - Goat, Mk - Monkey, P - Pig, Rb - Rabbit, S - Sheep, Z - Zebrafish

\*Species Reactivity Key:

E- ELISA, WB - Western blot, IH - Immunohistochemistry, IF - Immunofluorescence, FC - Flow cytometry, IC - Immunocytochemistry, IP - Immunoprecipitation, ChIP - Chromatin Immunoprecipitation, EMSA - Electrophoretic Mobility Shift Assay, BL - Blocking, SE - Sandwich ELISA, CBE - Cell-based ELISA, RNAi - RNA interference

### Datasheet

Description: Rabbit polyclonal antibody to PKC alpha

Immunogen: KLH-conjugated synthetic peptide encompassing a sequence within the C-term region of human PKC alpha. The exact sequence is proprietary.

Purification: The antibody was purified by immunogen affinity chromatography.

Clonality: Polyclonal

Form: Liquid in 0.42% Potassium phosphate, 0.87% Sodium chloride, pH 7.3, 30% glycerol, and 0.01% sodium azide.

Dilution: WB (1/500 - 1/1000), IH (1/50 - 1/100)

Gene Symbol: PRKCA

Alternative Names: PKCA; PRKACA; Protein kinase C alpha type; PKC-A; PKC-alpha

Entrez Gene (Human): 5578;

Entrez Gene (Mouse): 18750;

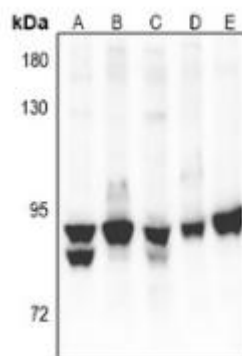
SwissProt (Human): P17252;

SwissProt (Mouse): P20444;

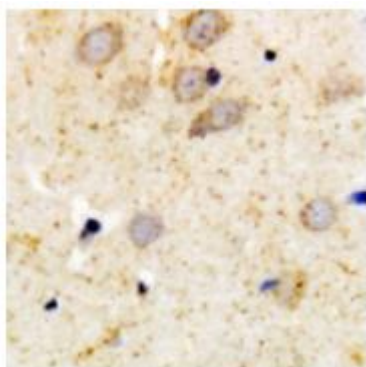
SwissProt (Rat): P05696;

Storage/Stability: Shipped at 4°C. Upon delivery aliquot and store at -20°C for one year. Avoid freeze/thaw cycles.

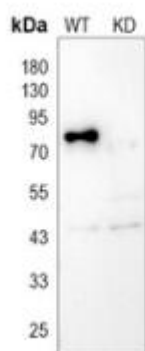
## Validation



Western blot analysis of PKC alpha expression in HeLa (A), COS7 (B), HEK293T (C), C6 (D), CT26 (E) whole cell lysates. (Predicted band size: 76 kD; Observed band size: 85 kD)



Immunohistochemical analysis of PKC alpha staining in human brain formalin fixed paraffin embedded tissue section. The section was pre-treated using heat mediated antigen retrieval with sodium citrate buffer (pH 6.0). The section was then incubated with the antibody at room temperature and detected using an HRP conjugated compact polymer system. DAB was used as the chromogen. The section was then counterstained with haematoxylin and mounted with DPX.



Western blot analysis of PKC alpha expression in wild type (WT) and knockdown (KD) HT1080 cell lysates.

官方网址: <http://www.genscion.com.cn>

订货热线: 4006169114、020-84224925

Email: [whiga22@126.com](mailto:whiga22@126.com)

