

Ø 22/25 mm Emergency Switches



S2ER Series CATALOG

For your safety, read and follow the considerations written in the instruction manual, other manuals and Autonics

The specifications, dimensions, etc. are subject to change without notice for product improvement. Some Models may be discontinued without notice.

Features

- Smooth operation
- High electrical conductivity
- Long-lasting durability

Specifications

Series	S2ER Series
Actuation distance	5.0 to 5.5 mm
Actuation angle	40° ± 7°
Actuation force	0.5 kgf (4.9 N) (per 1 contact)
Installation	Extended
Shock	300 m/s ² (≈ 30 G) in each X, Y, Z direction for 3 times
Shock (malfunction)	100 m/s ² (≈ 10 G) in each X, Y, Z direction for 3 times
Vibration	1.5 mm amplitude at frequency of 10 to 55 Hz (for 1 min) in each X, Y, Z direction for 2 hours
Vibration (malfunction)	1.5 mm amplitude at frequency of 10 to 55Hz (for 1 min) in each X, Y, Z direction for 10 minutes
Mechanical life cycle (control unit life cycle)	≥ 100,000 operations (20 operations/min)
Ambient temperature	-15 to 55 °C, storage : -25 to 65 °C (no freezing or condensation)
Ambient humidity	35 to 85 %RH, storage : 35 to 85 %RH (no freezing or condensation)
Protection structure	Control unit: IP52 (IEC standard)
Approval	CE ENEC EAC PS
Control unit weight	D30: ≈ 22.5 g D40: ≈ 22.5 g D60: ≈ 27 g
Housing weight	≈ 7 g

Contact blocks	
Power supply / current	110 VAC~ / 10 A, 250 VAC~ / 6 A
Dielectric strength	2,500 VAC~ 50/60 Hz for 1 minute
Insulation resistance	≥ 1,000 MΩ (500 VDC≡ megger)
Contact resistance	≤ 20 mΩ (initial)
Electrical life cycle	≥ 100,000 operations (20 operations/min)
Contact material	AgNi10
Approval	CE ENEC EAC PS
Weight	Modular type: ≈ 10 g, Singular type: ≈ 11 g
LED blocks	
Rated voltage	AC/DC voltage type: 12-24 VAC~ 50/60 Hz, 12-24 VDC≡ AC voltage type: 110-220 VAC~ 50/60 Hz
Current consumption	≤ 20 mA
Approval	CE ENEC EAC
Weight	AC/DC voltage type: ≈ 11 g, AC voltage type: ≈ 12 g

Sold Separately

- Contact blocks (SA□-C□□)
- LED blocks (SA□-L□□□)
- Switch enclosures (SA-□B□)
- Locking handle (SA□-LH)
- Switch washer (SA-SW□)
- Emergency switch nameplates (SA-N□)
- Emergency switch protective shrouds (SA-EG□)

Ordering Information

This is only for reference. For selecting the specified Model, follow the Autonics Model is based on control unit+block combination. Control units or blocks are sold separately. In case of block, refer to control switch accessories.

S2ER	-	E	①	R	②	③	④
Control unit				Block			

① Button type

- 1: (Non-illuminated) D30 + Long head
- 2: (Non-illuminated) D30 + Short head
- 3: (Non-illuminated) D40 + Short head
- 4: (Illuminated) D40 + Short head
- 5: (Non-illuminated) D60 + Short head

② Contact block

- A: 1 A contact
- 2A: 2 A contacts
- 3A: 3 A contacts
- B: 1 B contact
- 2B: 2 B contacts
- 3B: 3 B contacts
- AB: 1 A contact, 1 B contact
- 2AB: 2 A contacts, 1 B contact
- A2B: 1 A contact, 2 B contacts

③ LED block (D40)

- D: 1 AC/DC voltage type
- L: 1 AC voltage type

④ Block

- No mark: Singular type
- M: Modular type

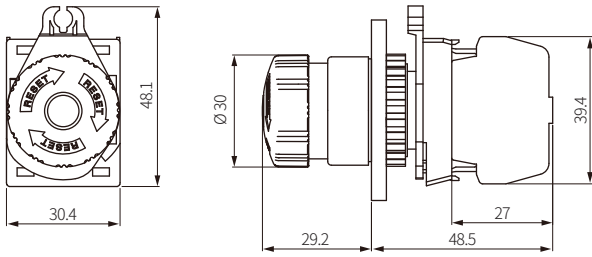
Model	Contact block		LED block	
	A contact	B contact	AC/DC voltage	AC voltage
S2ER-E1RA(M)	1	-		
S2ER-E1R2A(M)	2	-		
S2ER-E1R3A(M)	3	-		
S2ER-E1RB(M)	-	1		
S2ER-E1R2B(M)	-	2	-	-
S2ER-E1R3B(M)	-	3		
S2ER-E1RAB(M)	1	1		
S2ER-E1R2AB(M)	2	1		
S2ER-E1R2AB(M)	1	2		
S2ER-E2RA(M)	1	-		
S2ER-E2R2A(M)	2	-		
S2ER-E2R3A(M)	3	-		
S2ER-E2RB(M)	-	1		
S2ER-E2R2B(M)	-	2	-	-
S2ER-E2R3B(M)	-	3		
S2ER-E2RAB(M)	1	1		
S2ER-E2R2AB(M)	2	1		
S2ER-E2R2AB(M)	1	2		
S2ER-E3RA(M)	1	-		
S2ER-E3RA(M)	2	-		
S2ER-E3R3A(M)	3	-		
S2ER-E3RB(M)	-	1		
S2ER-E3RB-EL ⁽⁰¹⁾	-	1		
S2ER-E3R2B(M)	-	2		
S2ER-E3R3B(M)	-	3		
S2ER-E3RAB(M)	1	1		
S2ER-E3R2AB(M)	2	1		
S2ER-E3RA2B(M)	1	2		
S2ER-E4RAD(M)	1	-		
S2ER-E4R2AD(M)	2	-	1	-
S2ER-E4RBD(M)	-	1		
S2ER-E4R2BD(M)	-	2		
S2ER-E4RABL(M)	1	1		1
S2ER-E5RA(M)	1	-		
S2ER-E5R2A(M)	2	-		
S2ER-E5R3A(M)	3	-		
S2ER-E5RB(M)	-	1		
S2ER-E5R2B(M)	-	2	-	-
S2ER-E5R3B(M)	-	3		
S2ER-E5RAB(M)	1	1		
S2ER-E5R2AB(M)	2	1		
S2ER-E5RA2B(M)	1	2		

01) Acquired KC (HU02054-20014)

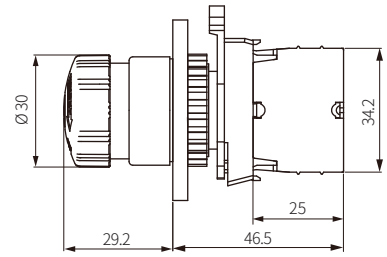
Dimensions

- Unit: mm, For the detailed drawings, follow the Autonics
- Panel thickness: ≤ 6 mm

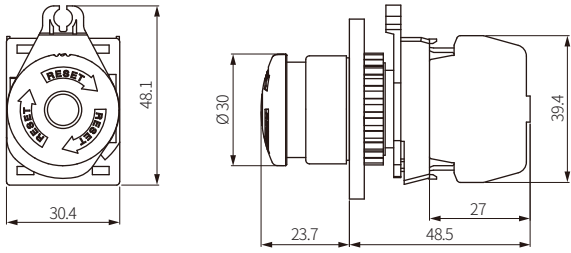
■ S2ER-E1R □ (D30 + long head, singular type block)



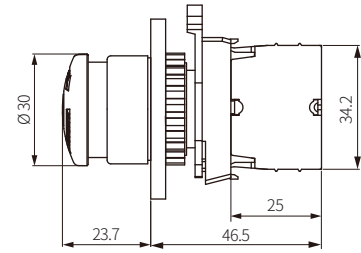
■ S2ER-E1R □ M (D30 + long head, modular type block)



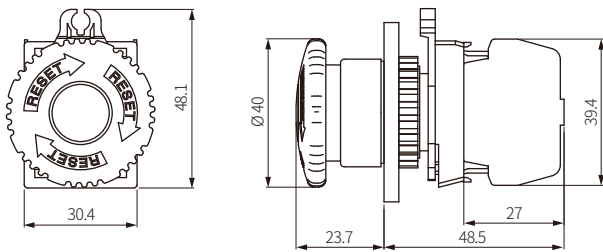
■ S2ER-E2R □ (D30 + short head, singular type block)



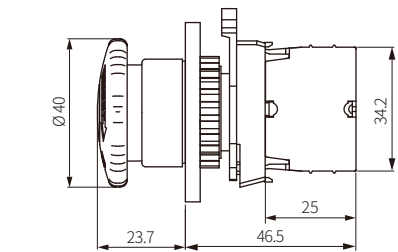
■ S2ER-E2R □ M (D30 + short head, modular type block)



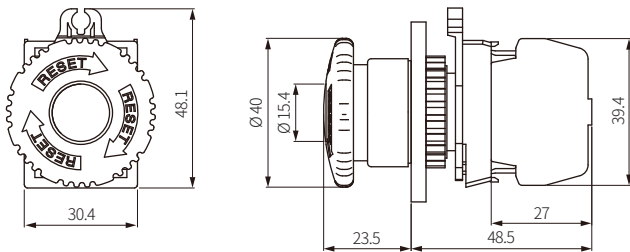
■ S2ER-E3R □ (D40 + short head, singular type block)



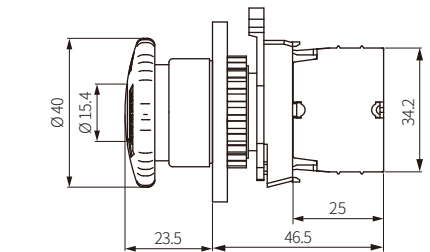
■ S2ER-E3R □ M (D40 + short head, modular type block)



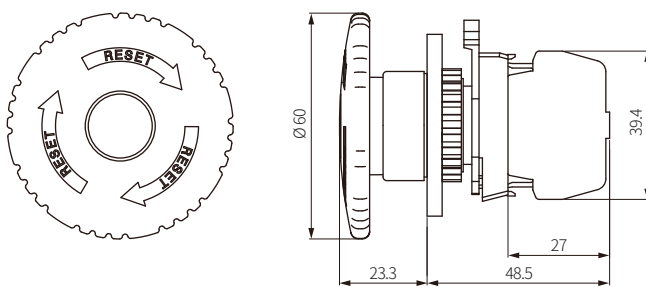
■ S2ER-E4R □ (D40 + short head, singular type block)



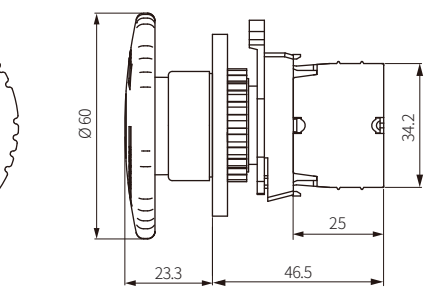
■ S2ER-E4R □ M (D40 + short head, modular type block)



■ S2ER-E5R □ (D60 + short head, singular type block)

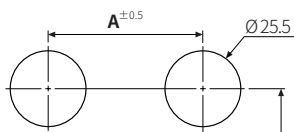


■ S2ER-E5R □ M (D60 + short head, modular type block)

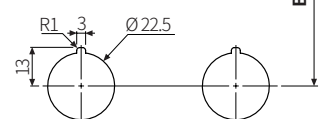


■ Panel cut-out

<Mounting round: Ø 25>



<Mounting round: Ø 22>



	A	B
D30	≧ 33	≧ 55
D40	≧ 55	≧ 55
D60	≧ 80	≧ 80