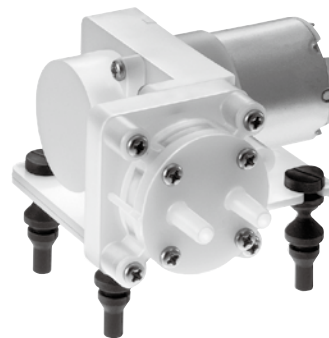


压缩泵 & 真空泵 / Compressor and Vacuum Pump

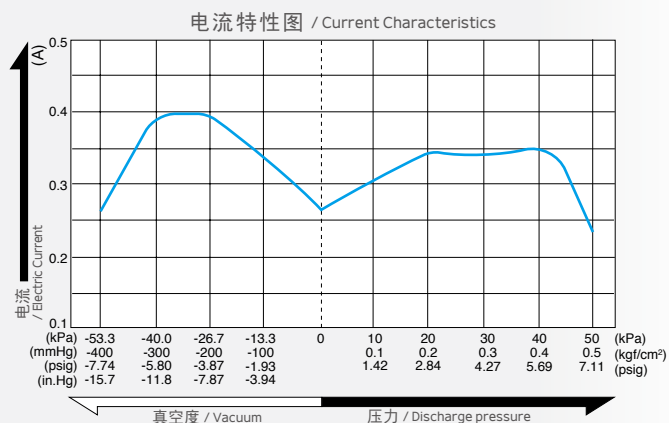
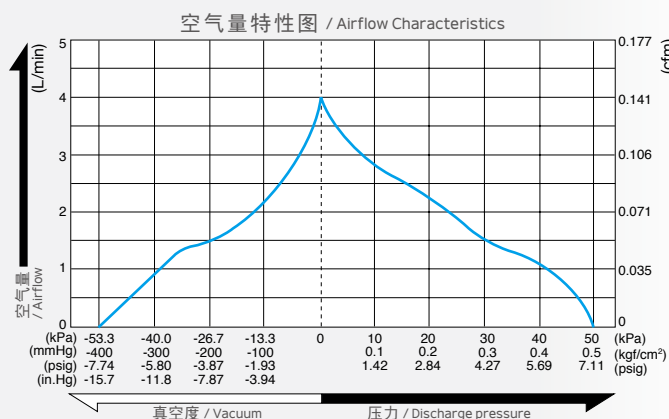
型式 DP0140

有刷马达
/ Brush DC Motor
(12 V DC)

兼用 / Dual Type



空气量和消耗功率 / Airflow & Electric Current



※ 特性图只是参考值，并不是保证值。
/ The characteristic charts are for reference only and are not guaranteed.

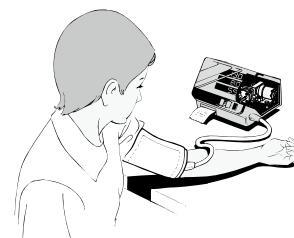
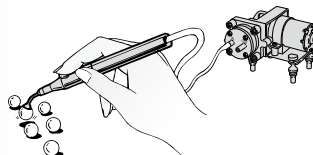
规格 / Specifications

达到真空度 / Attainable Vacuum	-53.3 kPa (-400 mmHg) -533 mbar -15.7 in.Hg
吐出空气量 / Free Air Displacement	4.0 L/min 0.141 cfm
额定电压 / Rated Voltage	12 V DC
最高压力 / Maximum Pressure	50 kPa (0.5 kgf/cm²) 0.5 bar 7.11 psig
最大电流 / Maximum Current	0.5 A
额定时间 / Duty Cycle	连续 / Continuous
耐用时间 (MTTF) / Rated Performance (MTTF)	800 小时 / hours
吸入口尺寸 / Inlet	φ5 mm (外径) 直管接头 / 3 mm O.D. straight barb
吐出口尺寸 / Outlet	φ5 mm (外径) 直管接头 / 3 mm O.D. straight barb
线圈绝缘等级 / Coil Insulation Class	相当于 E 类 E or its equivalent
安装尺寸 / Mounting Dimensions	52 (L) x 36 (W) mm 2-3/64" (L) x 1-27/64" (W)
本体重量 / Weight	0.19 kg 0.42 Lbs

用途例 / Application Examples

真空镊子 / Vacuum Sucking Pen

血压计 / Blood Pressure Tester



外形及安装尺寸图 / Dimensional Outline Drawing (单位 / Unit : mm)

