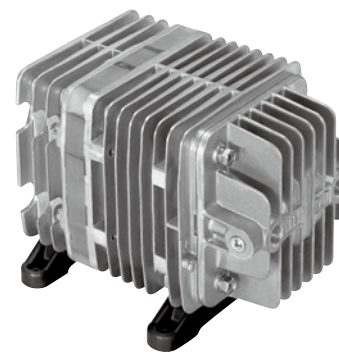
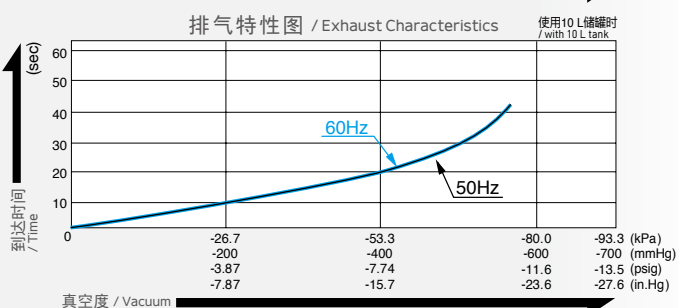
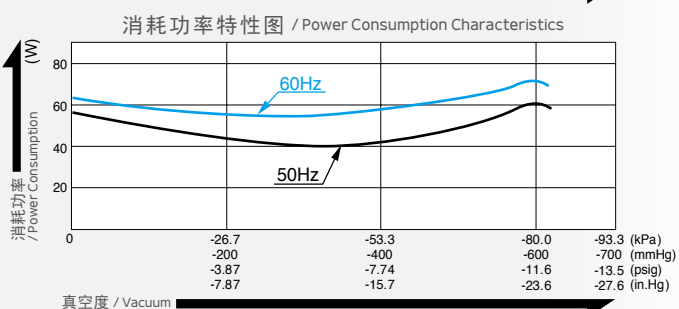
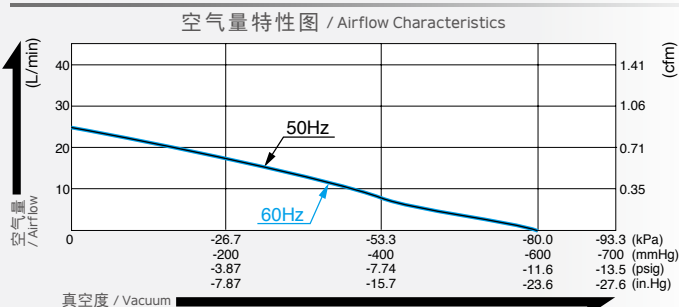


# 真空泵 / Vacuum Pump

## 型式 VPO660



### 空气量和消耗功率 / Airflow & Electric Current



※ 特性图只是参考值，并不是保证值。  
/The characteristic charts are for reference only and are not guaranteed.

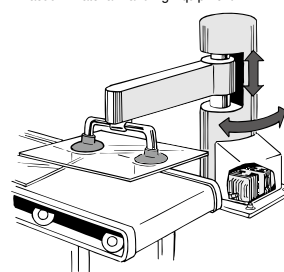
### 规格 / Specifications

达到真空度* / Attainable Vacuum	-80 kPa (-600 mmHg) -800 mbar -23.6 in. Hg		
吐出空气量 / Free Air Displacement	25 L/min 0.88 cfm		
额定电压 / Rated Voltage	100 V AC	115 V AC	230 V AC
消耗功率 / Power Consumption	60 W / 70 W	70 W	60 W
额定频率 / Rated Frequency	50 Hz / 60 Hz	60 Hz	50 Hz
耐用时间 / Rated Performance	6,000 小时 / hours		
吸入口尺寸 / Inlet	ISO Rc 1/4 (内螺纹)		
吐出口尺寸 / Outlet	ISO Rc 1/4 (内螺纹 / internal thread)		
额定时间 / Duty Cycle	连续 / Continuous		
线圈绝缘等级 / Coil Insulation Class	相当于 E 类, UL 规格品: 相当于 B 类 / E or its equivalent and B for UL		
安装尺寸 / Mounting Dimensions	102 (L) x 130 (W) mm 4-1/64" (L) x 5-1/8" (W)		
本体重量 / Weight	5 kg 11 Lbs		
导线长度 / Leadwire Length	300 mm 11-13/16"	300 mm 11-13/16"	600 mm 23-5/8"

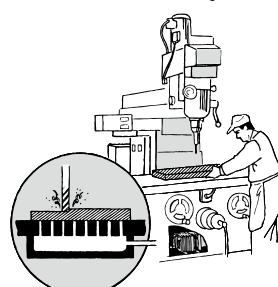
※ 高于 -53.5kPa 运转时需要在进气管路上加装一个放气阀或泄压阀。  
/ Operations at higher than -53.5kPa need an additional leak valve or relief valve on the inlet piping.

### 用途例 / Application Examples

真空吸附材料搬运 / Vacuum Material Handling Equipment



真空吸盘 / Vacuum Chucking



### 外形及安装尺寸图 / Dimensional Outline Drawing (单位 / Unit : mm)

