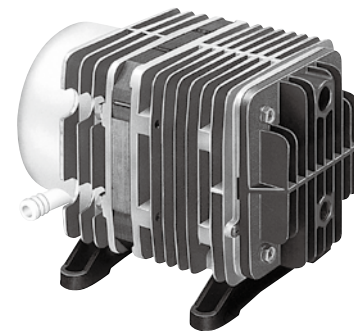
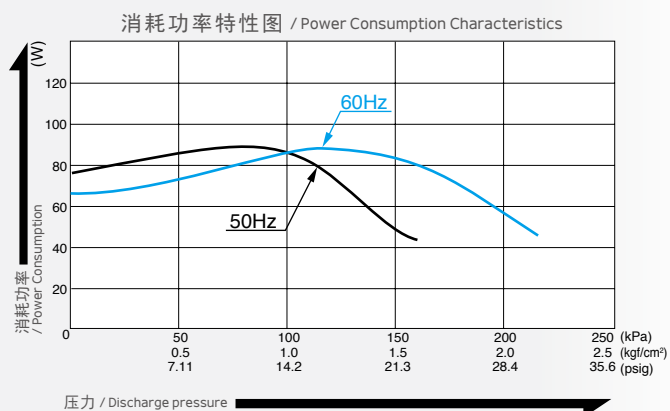
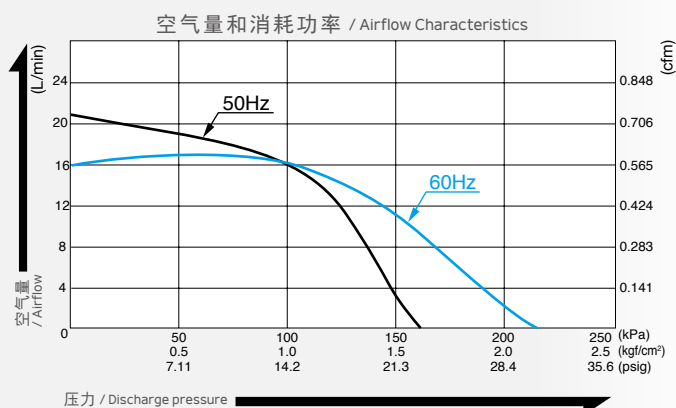


压缩泵 / Compressor

型式 AC0910



空气量特性图 / Airflow & Electric Current



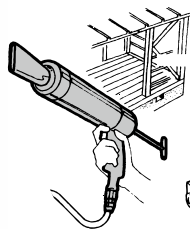
※ 特性图只是参考值，并不是保证值。
/The characteristic charts are for reference only and are not guaranteed.

规格 / Specifications

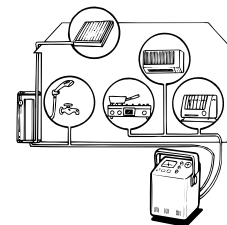
额定压力 / Rated Pressure	100 kPa (1.0 kgf/cm ²) 1.0 bar 14.2 psig		
吐出空气量 / Rated Airflow	16 L/min 0.57 cfm		
最高压力 / Maximum Pressure	150 kPa (1.5 kgf/cm ²) 1.5 bar 21.3 psig		
额定电压 / Rated Voltage	100 V AC	115 V AC	230 V AC
消耗功率 / Power Consumption	90 W / 85 W	85 W	90 W
额定频率 / Rated Frequency	50 Hz / 60 Hz	60 Hz	50 Hz
耐用时间 / Rated Performance	3,000 小时 / hours		
吐出口尺寸 / Outlet	ISO Rc 1/4 (内螺纹 / internal thread)		
额定时间 / Duty Cycle	连续 / Continuous		
线圈绝缘等级 / Coil Insulation Class	相当于 E 类, UL 规格品: 相当于 B 类 / E or its equivalent and B for UL		
安装尺寸 / Mounting Dimensions	102 (L) x 130 (W) mm 4-1/64" (L) x 5-1/8" (W)		
本体重量 / Weight	4.9 kg 10.8 Lbs		
导线长度 / Leadwire Length	300 mm 11-13/16"	300 mm 11-13/16"	320 mm 12-19/32"

用途例 / Application Examples

密封胶枪 / Sealant gun



检漏机 / Leakage Tester



气缸 / 气动卡盘 / Air Cylinder/Chuck Driver

外形及安装尺寸图 / Dimensional Outline Drawing (单位 / Unit : mm)

