



## ▶ Chart drives

725



ROBUSTNESS



LONG LIFETIME



ACCURACY

- Spring wound
- 11 - Jeweled escapement
- Interchangeable with CDS 820 battery chart drive
- A standard in most circular recorders

This chart drive was designed to operate under difficult conditions. It is of robust construction and the movement itself is protected by a cover with a sealing gasket and spring loaded washers. The output torque is much greater than any other chart drives, e.g. 24oz/in after 8 days run at 1 rev./24 hours.

### ▶ Technical data

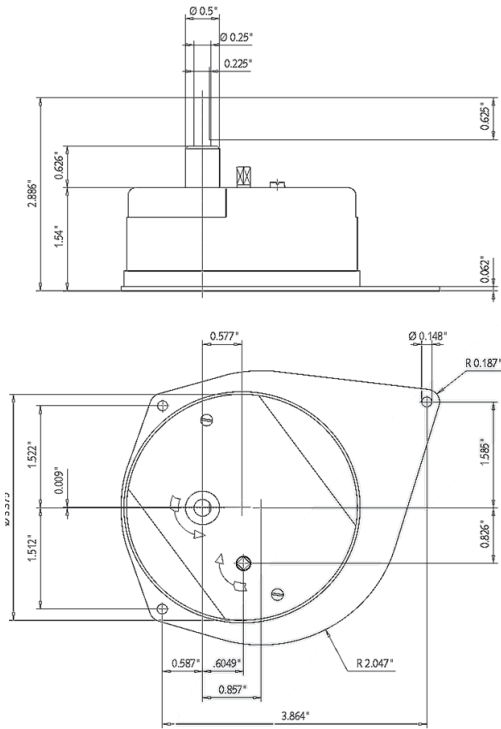
Part N°	Speed	Wind	Mounting Plate Type	Output Shaft
725R086	15 min / 1 hr	5 hr	A	1/4" D w/Flat - CCW
725R138	1 hr / 3 hr	2 D	A	1/4" D w/Flat - CCW
725R175	96 min / 24 hr	4 D	A	1/4" D w/Flat - CCW
725R077	2 hr / 8 hr	2 D	A	1/4" D w/Flat - CCW
725R081	4 hr	2 D	A	1/4" D w/Flat - CCW
725R170	4 hr	2 D	B	Threaded w/start knob – CW
725R189	24 hr	9 D	B	Threaded w/start knob - CW
<u>725R084</u> discontinued - replacement 820r001	<u>24 hr / 7 d</u>	<u>9 D</u>	<u>A</u>	<u>1/4" D w/Flat - CCW</u>
<u>725R127</u>	<u>24 hr / 7 d</u>	<u>9 D</u>	<u>C</u>	<u>Threaded / Grooved - CCW</u>

foxboro MO 152KP

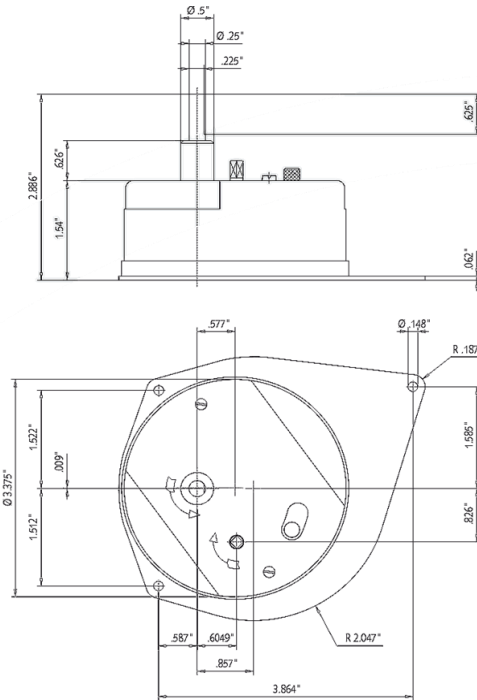
## ► Dimensions

Drawing not to scale. All dimensions in inches.

### • A - Pear-shaped mounting plate

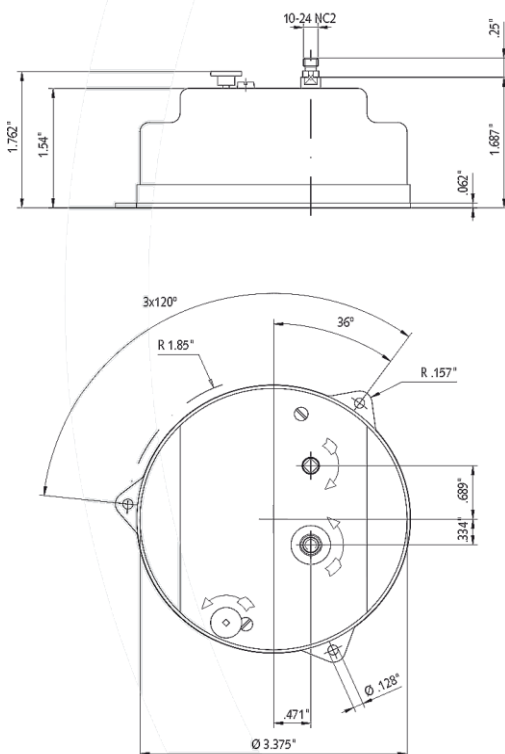


Single Speed Configuration



Dual Speed Configuration

### • B - Round mounting plate



### • C - Foxboro-style mounting plate

