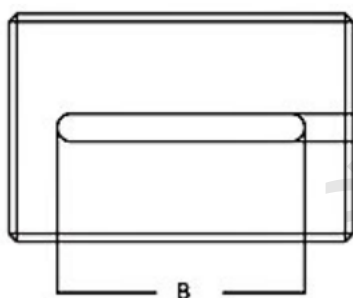




## Mouse & Rat Spinal Cord Matrices

Spinal cord matrices serve for precise and reproducible blocking of the spinal cord for freehand slicing. They are machined with high precision out of high quality stainless steel, robust and easy to clean. They can be autoclaved. #15171 and #15172 are for coronal (perpendicular) slicing, whereas #15070 allows both coronal and sagittal (longitudinal) slicing.

It is highly recommended to soak and clean the matrix each time immediately after use, not allowing the remaining tissue to dry.



### Size

15170, Mouse, Sagittal and Coronal, 1mm slices  
15171, Mouse, Coronal, 0.5mm slices  
15172, Rat, Coronal, 0.5mm slices

### A B Cavity Depth

Prod #	A	B	Cavity Depth
15170	2.55	32.0	5.0
15171	4.0	50.0	5.0
15172	4.0	96.0	5.0

Prod #	Description	Unit
15170	Mouse, Sagittal and Coronal, 1mm	each
15171	Mouse, Coronal, 0.5mm	each
15172	Rat, Coronal, 0.5mm	each