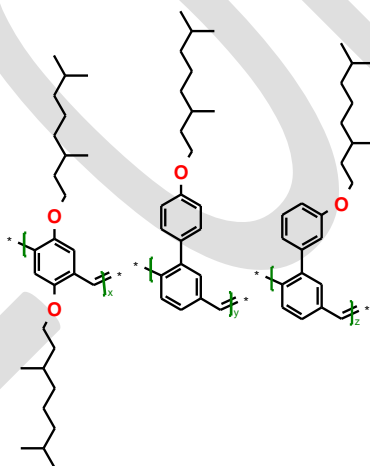


## CERTIFICATE OF ANALYSIS

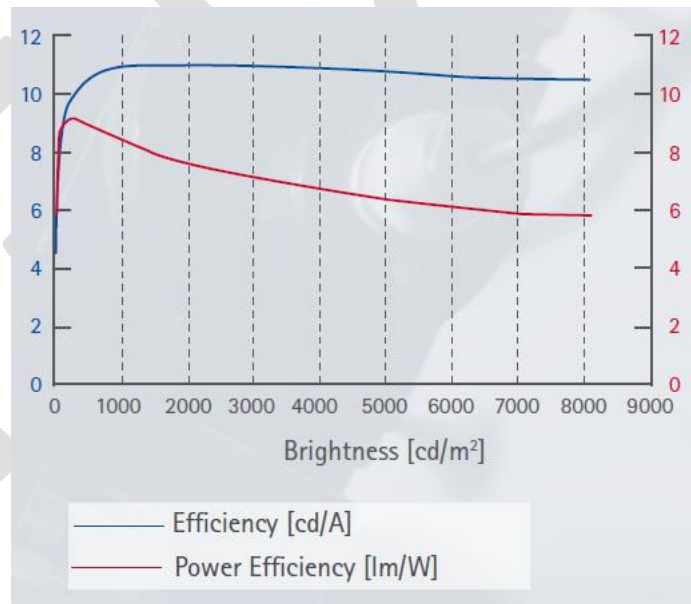
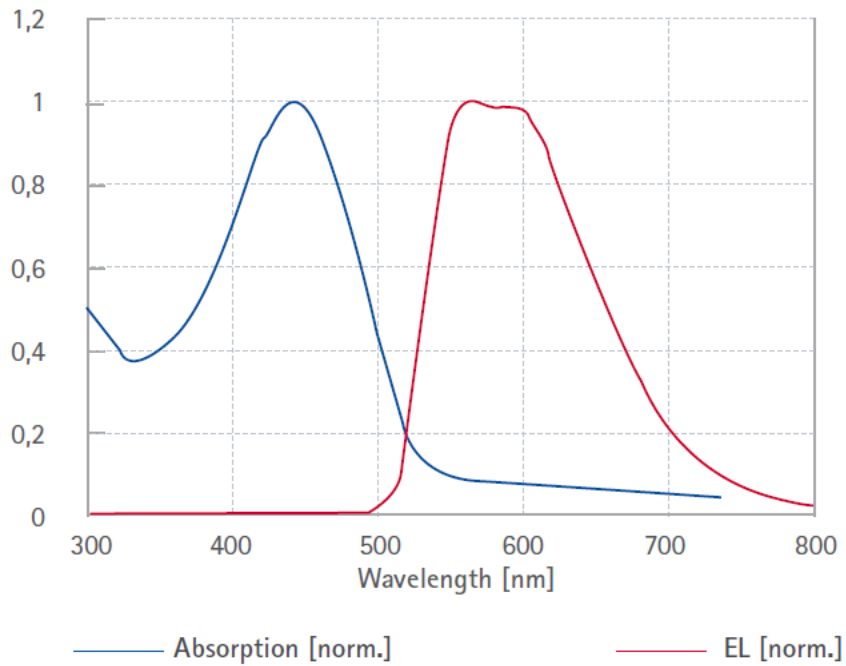
1M Material: PL0434/PL0433, Supra- Yellow  
Other Name: PDY-132, Super-yellow  
CAS No. 215612-43-4  
Chemical Structure: (proprietary end-capped)



Lot number: ED4025  
Appearance: Yellow Fiber  
Molecular weight (GPC): Mw ~ 100,000, PDI ~ 2.5 (PS Standard)  
Solubility: Soluble in toluene, xylene, chlorobenzene, dichlorobenzene and other selected solvents  
Assay: 99+% (basing NMRs of monomers)

1-Material is dedicated to provide the material according to customer's needs, and some material we promoted may be solely offered to certain customers for their specific needs in their research and development projects on a custom synthesis basis or on a contract research basis. All the material is offered as it is, along with the information and technical advice-where verbal, in writing or by way of trials-are given in good faith and are believed to be accurate but without warranty since the conditions of use are beyond the control of 1-Material, and this also applies where proprietary rights of third parties are involved. For the condition and term of our offer and service, please consult the disclaimer in our web: [www.1-material.com](http://www.1-material.com)

Reference Data:



-Material is dedicated to provide the material according to customer's needs, and some material we promoted may be solely offered to certain customers for their specific needs in their research and development projects on a custom synthesis basis or on a contract research basis. All the material is offered as it is, along with the information and technical advice-where verbal, in writing or by way of trials-are given in good faith and are believed to be accurate but without warranty since the conditions of use are beyond the control of 1-Material, and this also applies where proprietary rights of third parties are involved. For the condition and term of our offer and service, please consult the disclaimer in our web: [www.1-material.com](http://www.1-material.com)