

▶ Double-door high-temperature oven OVEN-1960

Custom solutions

High temperature oven for industrial and mining enterprises, laboratories, scientific research units for drying, baking, melting wax, sterilization. High temperature oven is one of the commonly used equipment in various aging tests and is widely used in electronic, computer, communication and other fields.



High-temperature oven studio is of stainless steel construction. The temperature of the workplace is automatically controlled by the temperature controller, and there is an automatic constant temperature and time control device, and equipped with an overtemperature automatic power failure and alarm circuit, reliable control and safe use.

Technical characteristics

Performance:

Type: OVEN-1960

Temperature range: RT~200°C

Temperature fluctuation: $\leq \pm 0.5^\circ\text{C}$

Temperature deviation: $\leq \pm 2.0^\circ\text{C}$

Temperature uniformity: $\leq 2^\circ\text{C}$

Increase temperature rate requirements: $3.5^\circ\text{C}/\text{min}$ ((Nonlinear empty load))

Structure: double door to high temperature oven

Working volume: 1960L

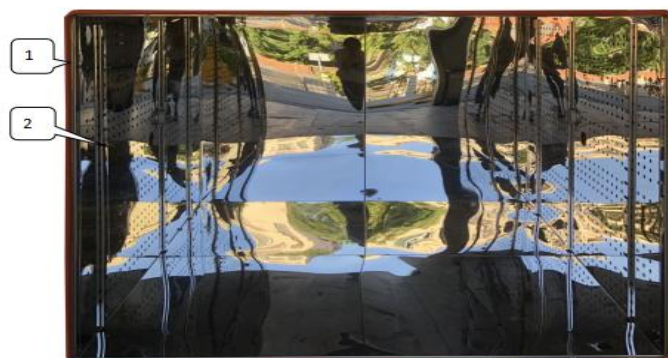
Dimensions (mm)	w	h	d
Use full	1400	1000	1400
Over all	1720	1820	1710

high-temperature oven features:

1. Accurate temperature control and high accuracy. Due to the use of a unique heating mode and electronic control system, can maintain the temperature of the whole test area high uniform, much higher than similar products;
2. The temperature setting range of the equipment is wide and continuously adjustable. It can be set within room temperature ~200°C. If customers have special requirements, they can design higher temperature products;
3. Real-time display of the temperature in the test area, accurate monitoring and clear monitoring;
4. The system protection functions are complete to ensure safe, long-term and stable fault-free operation;
5. Beautiful appearance, convenient construction, short construction period;
6. Good sealing, can maintain efficient work;

Room structure:

number	Name	Illustrate
1	Sealant	Heat preservation and prevention of air leakage
2	Sample holder track	Used to hold the sample holder



operational principle

air conditioning

1. Air regulation mode: forced ventilation internal circulation balance temperature

Lab Companion®

regulation;

2. Air circulation device: built-in air conditioning device, circulating air duct, long axis axial flow fan;

3. Heating method: high-quality nickel-chromium alloy electric heater.

TT&C system

1. Temperature measurement: PT100 Platinum resistance;

2. Control device: use the intelligent digital temperature controller

Temperature control mode: automatic set two-bit PID control

Temperature setting mode: make the digital setting in the controller

Temperature display mode: the set temperature and the measured temperature are displayed in the controller

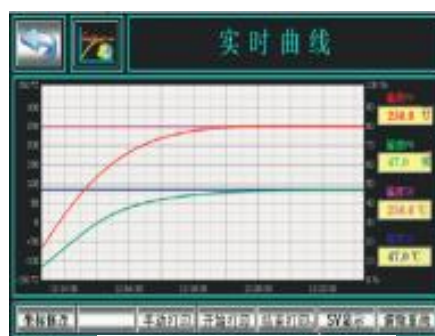
The product has a self-setting function to ensure that the temperature is constant at each set point

The product has a linear compensation function to avoid the inconvenience of display errors

3. The product is separately equipped with an overtemperature protection instrument, which is used to set the upper limit alarm of the working temperature to prevent the damage caused to the test product and test box due to failure



Display the interface



Temperature profile

4. Operation mode: constant operation

► safety precautions

1. Over temperature protection setting: triple over temperature protection setting

Set temperature of the over temperature dial plate = set temperature + 15°C. When the temperature in the box exceeds the set temperature of the over temperature dial, the buzzer in the box alarms, the box is in standby state, and it should be reused after manual reset.

2. Over temperature alarm: when the product in the box continues to heat up and exceeds the temperature set by the internal parameters of the controller, the buzzer in the box will alarm, which should be reset manually before reuse.

3. Anti-dry burning protector: set near the heating pipe. When the heating dry burning exceeds the temperature set of the protector, the equipment alarms and stops.

4, the heater short circuit;

5. Drum-blast motor overload

.....
www.labcompanion.cn

Lab Companion Industrial Park - Chang ping Town - Dong guan City-Guangdong Province - China

Tel:+86 400 628 2786

e-mail:info@lab companion.cn