



**ROUSSELET
ROBATEL**



中试和小型生产工业化离心机



EHL 603 DRG



RC 60 Vx KSA.R

各种固液分离离心机广泛应用于
化工，制药，食品，生物技术等工业



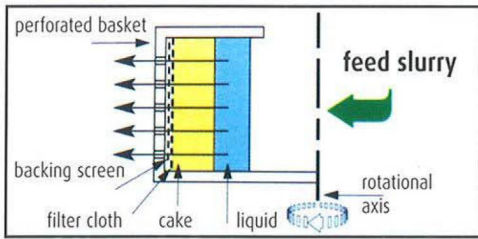
RC 40 Vx.R

- 用于固液离心过滤或沉降法
- 既可用于简单的分离，也可用于复杂的工艺
- 适用于从散装化学药品到具有附加价值的各种产品
- 既适用于标准工艺条件，也适用于极端恶劣的条件（如易爆环境，高腐蚀材料及危险品等...）
- 可用于单个及多个产品的加工

上部卸料立式离心机 Type RC 40/50/60

离心过滤

离心固液分离使用带孔转鼓配滤布或可卸式滤袋



我们的离心机具备各种技术性能及任选和外围设备，因而可满足每个客户的特殊需求。

两种固体卸料方法：

- 手动卸料，用勺子舀出：RC型…
- 半自动，可卸式滤袋：RC…KSA型
- 结构坚固，放置在减震垫上（振动控制可选）
- 离心机及附属设备安装在可移动平台车上。平台车由涂漆钢或不锈钢制造，带脚轮。
- 电机通过皮带驱动（防护装置隔离皮带和电机从而避免污染）
- 交流变频驱动实现变速操作
- 不锈钢构造或其他材质（合金，钛…）或对特殊部位或所有物料接触部位涂层处理（哈拉，特种胶…）
- 不同级别抛光或电抛光
- 各种材料的密封（氯丁橡胶，乙丙橡胶，氟橡胶，硅树脂，聚四氟乙烯…）
- 依据工艺需求可选择各种不同滤布（聚丙烯，聚酯，聚酰胺，棉…）



RC 50 Vx.R



RC 50 Vx.R

技术数据

Type	Basket						Centrifugal Force G	Motor Power kW
	Diameter mm	Height mm	Useful volume l	Maximum load Kg	Filtration area m ²	Maximum speed rpm		
RC 40	400	250	20	25	0.31	3000	2010	2.2
RC 40 KSA	400	280	18	22.5	0.31	2300	1180	2.2
RC 50	500	320	34	42.5	0.50	2250	1410	4
RC 50 KSA	500	320	35	43	0.50	1700	810	4
RC 60	600	330	55	68.5	0.57	1800	1090	7.5
RC 60 KSA	600	305	60	75	0.57	1500	750	7.5



RC 40 Vx KSA.R

自动刮刀卸料离心机

两种类型:

- 卧式，固体物料通过斜斗排出
- 立式，固体物料从转鼓底部排出

EHBL 253 DRG



• 任选功能:

- 密闭或防爆电气设备（符合欧洲或美国电气标准）及符合相应地区的防爆指令
- 安装在危险区域的离心机，封闭其防爆控制系统
- 气密结构适配惰性气体保护
- 进料管，清洗管及卸料管可选各种接头和连接件
- 带刮水片的全景视镜。另有进程观测孔（带灯和不带灯两种）

• 可选设备:

- 根据清洗和进入机器内部等需求（可选CIP在线清洗系统，快速卸下转鼓，全开式机壳等设计）
- 根据对安全等级的需求（可选转子一点接地保护，氮气保护，压力监测，氧气监控系统，虹吸装置）

• 附加设备:

- 滤饼探测器（转鼓直径不低于500毫米）
- 立式上部卸料离心机提升系统可配:
- 可卸式滤袋（KSA型）
- 快速卸下转鼓
- 可更换不同转鼓将过滤离心（带孔转鼓）转换成沉降式离心（碗式转鼓）（适用于RC40和RC50）

- 离心机安装在减震基础板上，配减震垫

- 液压控制刮刀动作（或EHBL253型配气缸）

- 众多的选项与特色（建筑材料，抛光等级，CIP清洗系统，自动控制系统）

- 卧式，GMP设计，清洗室安装

- 立式，外壳可取下



Technical characteristics

Type	Diameter mm	Depth/Height mm	Useful volume l	Maximum load Kg	Maximum speed rpm	Centrifugal Force G	Motor power kW
RC 63 Vx DEC	630	370	50	62	1500	790	7,5
EHBL 253	250	125	2,5	3	3000	00	1,5
EHBL 503	500	250	24	30	2600	1890	7.5
EHBL 633	630	315	40	50	2400	2020	11

简化型:

- 此离心机类型不配防爆和惰性气体保护系统。适用于水剂加工。

- 直接与电机连接，电力制动

- 三足式

可选项:

不同建造材料，不同转速，进料管，清洗管



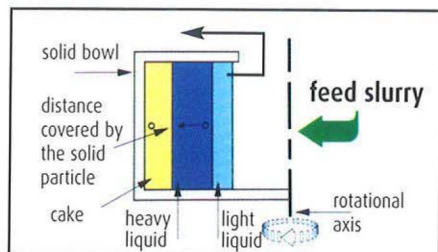
SA 40 Vx

Technical characteristics

Type	Diameter mm	Depth/Height mm	Useful volume l	Maximum load Kg	Maximum speed rpm	Motor power kW
SA 40	400	250	15	18	1500	1,5
SA 50	500	280	30	37	1500	2,2

立式沉降式离心机:

TypeSLAB 420/540 型和DRC40 / 50 / 60



离心沉降式

在碗状转鼓中进行固/液，液/液或固/液/液的离心分离

五种型号，其中两种因其极高的离心力（离心机市场最高离心力）使其成为非常高效的分离产品。

- 排出液体：通过撇液器或溢流的方式
- 排出固体：通过手动或撇液器

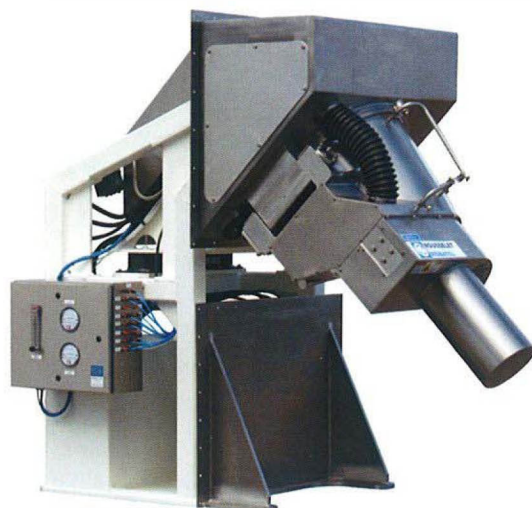
- 碗式转鼓有带挡板和不带挡板两种
- GMP设计：机壳全开式，平坦的转鼓底部，极易清洗（SLAB型），伸缩自如的撇液器，CIP在线清洗系统...
- 安装在平台车上，便于移动
- 多种选项，与过滤离心机中提及的选项类似
- 可将碗式转鼓换成带孔转鼓和管子（最小型号）



DRC 50 15

Technical characteristics

Type	Bowl					Centrifugal Force G	Motor power kW
	Diameter mm	Height mm	Useful volume l	Maximum load Kg	Maximum speed rpm		
SLAB 420	420	200	18	22	4300	4340	5.5
SALB 540	540	335	40	50	2600	2040	5.5
DRC 40	400	255	18	22	2250/3000	2010	2,2
DRC 50	500	320	35	43	2250/2750	1410	4
DRC 60	600	350	60	75	870/2600	1090	9



DHBL 503 DRG



SLAB 420



DRC 60 Vx



卢赛乐
卢巴特

卢赛乐·卢巴特离心机

地址：法国昂诺内莱茵河多瑙河大街45号

E-mail: rousselet.sa@rousselet.fr

中国业务拓展经理：胡月英

电话：33 (0) 4 75 69 22 11

Web: www.rousselet.com

手机：+86 1376 1555 630

传真：33 (0) 4 75 67 69 80

www.robatel.com

E-mail: clairehu@rousselet.fr



**ROUSSELET
ROBATEL**



INDUSTRIAL CENTRIFUGES FOR PILOT PLANT DUTY AND SMALL SCALE PRODUCTION



EHL 603 DRG

**A wide range of centrifuges
for Solid / Liquid separation
in the Chemical, Pharmaceutical, Food ,
and Biotechnology Industries**

- For solid/liquid filtration or solid/liquid decantation.
- Can be used for simple separations or more complex processes.
- For all types of products, from bulk chemicals to high value-added products.
- For standard process conditions as well as extremely challenging ones (explosive environments, hazardous materials, corrosive materials...)
- For mono-product or multi-product processing.



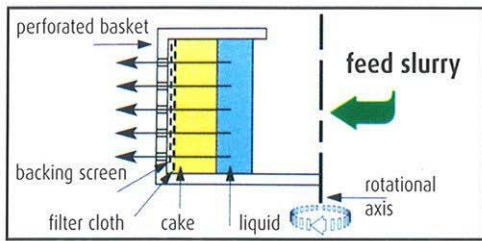
RC 60 Vx KSA.R



RC 40 Vx.R

TOP DISCHARGE VERTICAL AXIS CENTRIFUGES

Type RC 40/50/60



Centrifugal filtration

Centrifugal Solid/Liquid separation using a perforated basket equipped with a filter cloth or removable filter bag.

A wide variety of technical characteristics as well as optional and peripheral equipment to adapt the centrifuges to each customer's specific needs.

Available with two solids discharge methods:

- Manual removal using a scoop: Model RC...
- Semi-automatic removable filtration bag: Model RC... KSA

- Rigid frame mounted on vibration isolators (optional vibration monitoring).
- Centrifuge and accessories installed on a portable skid or cart, fabricated from painted steel or stainless steel, with locking casters.
- Belt driven via electric motor (with the possibility of isolating the belts and motor with guards to prevent contamination).
- Variable speed using an AC variable frequency drive.
- Stainless steel construction or other materials (Alloys, Titanium...) or coatings (Halar, special rubbers...) for selected portions or all parts in contact with products.
- Various grades of polishing and electro-polishing available
- Seals available in many materials (Neoprene, Ethylene Propylene, Viton, Silicone, PTFE encapsulated...).
- A wide variety of filter media (polypropylene, polyester, polyamide, cotton...) can be used to fabricate filtration bags depending on the processing requirements



RC 50 Vx.R



RC 50 Vx.R

Technical characteristics

Type	Basket						Centrifugal Force G	Motor Power kW
	Diameter mm	Height mm	Useful volume l	Maximum load Kg	Filtration area m ²	Maximum speed rpm		
RC 40	400	250	20	25	0.31	3000	2010	2.2
RC 40 KSA	400	280	18	22.5	0.31	2300	1180	2.2
RC 50	500	320	34	42.5	0.50	2250	1410	4
RC 50 KSA	500	320	35	43	0.50	1700	810	4
RC 60	600	330	55	68.5	0.57	1800	1090	7.5
RC 60 KSA	600	305	60	75	0.57	1500	750	7.5



RC 40 Vx KSA.R

AUTOMATIC CENTRIFUGES WITH SOLIDS DISCHARGE BY SCAPER

Available in two versions:

• **Horizontal axis with solids discharge through an inclined chute,**

• **Vertical axis with solids discharge through basket bottom.**

EHL 253 DRG



• Optional features :

- Water-tight or explosion-proof electrical equipment (according to European or American electrical standards) with ATEX conformity for the corresponding markets.
- Explosion-proof control enclosures for installation in hazardous environments.
- Vapour-tight construction suitable for inert gas blanketing.
- Feeding, washing, and discharging pipes available with a wide range of process connections and adapters.
- Panoramic sight glass with wiper blade. Additional process observation ports with or without lamp.

• Optional equipment :

- Depending on cleaning and accessibility requirements (CIP systems, quick release basket, full-opening casing)
- Depending on safety requirements (rotor grounding, nitrogen blanketing, pressure monitoring and oxygen monitoring systems, hydraulic guard).

• Possible complementary equipment :

- Cake detector (for 500 mm basket diameter and larger)
- Hoisting system for vertical axis top discharge centrifuges equipped with:
 - . Removable filter bag (KSA version)
 - . Quick release basket.
- Interchangeable decanter kits to transform a filtration centrifuge into a batch decanter (available for RC 40 and RC 50).

• Mounted on an integral inertia plate with vibration isolators.

• Hydraulic actuation of the scaper (or with air-over-oil cylinder on the Model EHL 253).

• Numerous options and features (construction materials, polishing grades, CIP, automatic control systems).

• GMP design with possible clean room installation for horizontal axis machines.

• Optional fully retractable casing on vertical axis centrifuges



Technical characteristics

Type	Diameter mm	Depth/Height mm	Useful volume l	Maximum load Kg	Maximum speed rpm	Centrifugal Force G	Motor power kW
RC 63 Vx DEC	630	370	50	62	1500	790	7,5
EHL 253	250	125	2,5	3	3000	00	1,5
EHL 503	500	250	24	30	2600	1890	7.5
EHL 633	630	315	40	50	2400	2020	11

SIMPLIFIED MODELS : WITH DIRECTLY COUPLED AXIAL MOTOR

• These centrifuges cannot be supplied in an explosion-proof and inert gas blanketed version. Their use is limited to aqueous processing.

• Direct motor coupling and electric braking.

• Triple suspension

Options available :

various materials of construction, variable speed, feeding tube, washing tube...



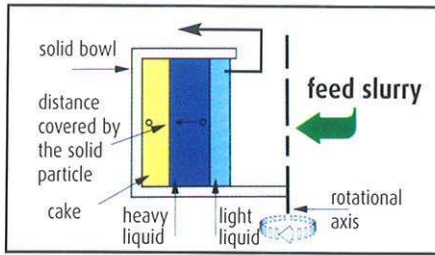
SA 40 Vx

Technical characteristics

Type	Diameter mm	Depth/Height mm	Useful volume l	Maximum load Kg	Maximum speed rpm	Motor power kW
SA 40	400	250	15	18	1500	1,5
SA 50	500	280	30	37	1500	2,2

VERTICAL AXIS DECANTING CENTRIFUGES:

Type SLAB 420/540 and DRC 40 / 50 / 60



Five models, including two with extremely efficient separation due to the very high centrifugal forces generated, among the highest in the market.

•Liquid removal: by means of skimming pipe(s) or by overflowing.

•Solids removal: manual or by skimming pipe

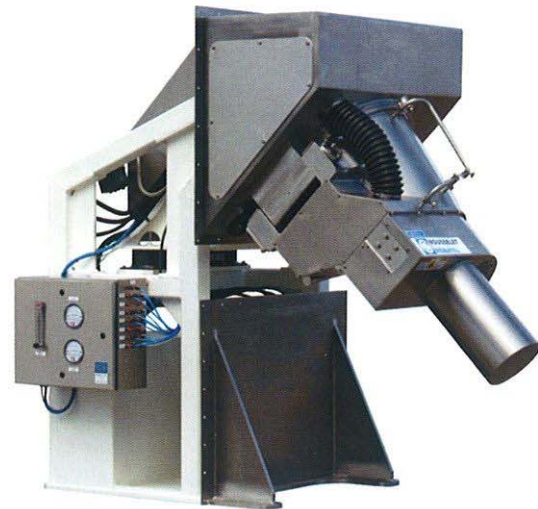
Centrifugal decantation

Centrifugal solid/liquid, liquid/liquid, or solid/liquid/ liquid separation in a solid bowl

- Bowl can be fabricated with or without baffles.
- GMP design: full-opening casing, easily cleanable bowl with flat bottom (SLAB models), retractable skimmer, CIP....
- Skid-mounted for easy portability.
- Many options available, similar to those mentioned for our filtration centrifuges.
- Filtration kits available with perforated basket and wash tube (for smallest models).



DRC 50 15



DHBL 503 DRG

Technical characteristics

Type	Bowl					Centrifugal Force G	Motor power kW
	Diameter mm	Height mm	Useful volume l	Maximum load Kg	Maximum speed rpm		
SLAB 420	420	200	18	22	4300	4340	5.5
SALB 540	540	335	40	50	2600	2040	5.5
DRC 40	400	255	18	22	2250/3000	2010	2,2
DRC 50	500	320	35	43	2250/2750	1410	4
DRC 60	600	350	60	75	870/2600	1090	9



SLAB 420



DRC 60 Vx

ROUSSELET CENTRIFUGATION SA

Headquarters
Avenue Rhin et Danube
PAE de Marenton
07104 ANNONAY - FRANCE



+ 33 (0) 4 75 69 22 11



+ 33 (0) 4 75 67 69 80

E-mail rousselet.sa@rousselet.com

Web

www.rousselet.com

UK :
ROUSSELET ROBATEL UK Ltd
Parkside House, 17 East Parade
HARROGATE
NORTH YORKSHIRE HG1 5LF

+ 44(0) 1 423 530 093

+ 44(0) 1 423 530 120

sales@rousselet-robotel.co.uk

Germany :
ROUSSELET CENTRIFUGATION SA

Bierbacher Str. 30
D-66424 HOMBURG-WÖRSCHWEILER

+ 49(0) 6848 730580

+ 49(0) 6848 730581

rousselet@t-online.de

USA :
ROBATEL Inc.

703 West Housatonic Street
PITTSFIELD
MA 01201

+ 1 413 499 4818

+ 1 413 499 5648

sales@robotel.com

www.rousselet-robotel.com